

THE ARCHIVISION
BASE COLLECTION
16,000 IMAGES



RONCHAMP • BY LE CORBUSIER



an image source for visual resource
professionals

Renseignements généraux en français
disponibles sur demande.

No part of this publication may be reproduced or printed,
in whole or in part, without the
written consent of Archivision.

All terms and fees subject to change without notice.

Archivision Inc.
© 2009 Archivision Inc. All rights reserved.

version April 2009

THE ARCHIVISION DIGITAL RESEARCH LIBRARY

This catalogue is a partially illustrated content list of architectural sites, gardens, parks and works of art which comprise the Archivision Digital Research Library. The Archivision Library is currently 46,000 18 MB files and is composed of:

- 1) Base Collection (16,000 images)
- 2) Addition Module One (6,000 images)
- 3) Addition Module Two (6,000 images)
- 4) Addition Module Three (6,000 images)
- 4) Addition Module Four (6,000 images)
- 4) Addition Module Five (6,000 images)

The content coverage within each Library module is:

- ∴ 60% architecture (most periods)
- ∴ 20% gardens & landscapes
- ∴ 15% public art
- ∴ 5% other design related topics

The Archivision Library makes an ideal complement to any core art digital collection, such as the Saskia Archive or ARTstor. Only the Archivision Digital Research Library meets the needs of students and faculty – for both research and teaching – in the disciplines of architecture, landscape architecture, and urban planning. We do not offer a subscription service – you must sign a site license agreement and pay a one-time license fee for the Library – then you may keep the images and related metadata in perpetuity with no additional annual fees. The exception is where you choose one of our hosted server options – the annual fee you pay is only for the access service.



HOW TO ORDER

SINGLE IMAGES:

The license of small groups of single images is available through our agent Scholars Resource. To search our image sets on the Scholars Resource website, you may use our set codes (or set titles) in the Quick Search field. All of the Archivision holdings may be seen in the Advanced Search – by Vendor – at:

www.scholarsresource.com

ARCHIVISION LIBRARY:

To license the Base Collection or Addition Modules please contact our sales representative, **Susan Jane Williams**. She will be happy to provide you with a quote based on your situation and needs.

Susan Jane Williams, Archivision Sales Rep. and Data Specialist

email: **susan@archivision.com**
toll free: 1-866-712-4627
fax: 514-332-1445

RECENT, PROFESSIONAL PHOTOGRAPHY THAT YOU LICENSE AND KEEP IN PERPETUITY. DISCOVER THE DIFFERENCE.

You may now tour the Archivision Library – 46,000 images with complete metadata – online via our new MDID or Luna Demos.

Please visit us online and take your tour today!

www.archivision.com

The **Archivision Digital Research Library** is a unique and fast growing collection of high quality images – photographed by a professional photographer, architect and past VR curator.

Each site documentation is extensive – intending to provide for in-depth visual research and analysis by students of architecture, landscape architecture, urban planning, archaeology, art and art history.

► ABOUT THE ARCHIVISION LIBRARY

46,000 IMAGES

A core architecture collection covering important Egyptian, Greek, Roman, Medieval, Renaissance, Baroque, 18th and 19th Century, Islamic and Modern sites, gardens, parks and works of public art selected from our growing archive of more than 120,000 images. The Library can only be licensed in modules, starting with the Base Collection of 16,000 images. The Library expands each year via Addition Modules of 6,000 images each. The Addition Modules are licensed in sequence only, as they complement the growth and balance of the Library as a whole.

DELIVERY SYSTEMS AND COLLECTION MANAGEMENT OPTIONS

The Archivision Library has options for every stage of digital collection development – and every budget. For those institutions that have already chosen cataloging and delivery systems software, the Archivision Library is easy to load with ample format and derivative image choices and rich metadata that is mappable to any standard. The Archivision Library has been successfully used in all the major delivery systems.

For those institutions that are still investigating digital collection software, the Archivision Library presents a unique and no-fail base from which to test one or even several solutions economically.

THE ARCHIVISION DIGITAL RESEARCH LIBRARY

(licensed by Library modules)

ONE-TIME LICENSE FEES PER INSTITUTION

.: all fees are one-time, in perpetuity, in US\$ and subject to change :.
(you may split payment over two fiscal years)

Images per Library module >>		16,000 images	+6,000 images	22,000 images	28,000 images
# OF STUDENTS UP TO:	BASE COLLECTION FEE	EACH ADDITION MODULE FEE	FEE WITH ADDITION MODULE ONE	FEE WITH ADDITION MODULE TWO	
1	250	\$6,800	\$3,000	\$9,800	\$12,800
2	500	\$7,000	\$3,250	\$10,250	\$13,500
3	2,000	\$8,000	\$3,500	\$11,500	\$15,000
4	5,000	\$9,000	\$3,775	\$12,775	\$16,550
5	7,500	\$12,000	\$4,500	\$16,500	\$21,000
6	10,000	\$15,000	\$5,625	\$20,625	\$26,250
7	20,000	\$24,000	\$9,000	\$33,000	\$42,000
8	30,000	\$36,000	\$13,500	\$49,500	\$63,000
9	50,000	\$44,000	\$16,500	\$60,500	\$77,000
10	75,000	\$48,000	\$18,000	\$66,000	\$84,000
11	100,000 †	\$55,000	\$20,625	\$76,625	\$96,250

OPTIONAL ANNUAL HOSTED SERVER ACCESS FEES

.: all fees are annual, for service only, in US\$ and subject to change :.
(no software license needed for these services)

Choose access from a remote server via ALMAGEST or LUNA*

.: set-up fee \$350 per institution :.

Images per Library module >>		16,000 images	+6,000 images	22,000 images	28,000 images
# OF STUDENTS UP TO:	BASE COLLECTION FEE	EACH ADDITION MODULE FEE	FEE WITH ADDITION MODULE ONE	FEE WITH ADDITION MODULE TWO	
1	250	\$525	\$55	\$580	\$635
2	500	\$750	\$65	\$815	\$880
3	2,000	\$850	\$75	\$925	\$1,000
4	5,000	\$900	\$85	\$985	\$1,070
5	7,500	\$1,000	\$105	\$1,105	\$1,210
6	10,000	\$1,200	\$135	\$1,335	\$1,470
7	20,000	\$1,400	\$165	\$1,565	\$1,730
8	30,000	\$1,800	\$195	\$1,995	\$2,190
9	50,000	\$2,300	\$245	\$2,545	\$2,790
10	75,000	\$3,500	\$300	\$3,800	\$4,100
11	100,000 †	\$3,750	\$350	\$4,100	\$4,450

* THIS IS NOT A SUBSCRIPTION SERVICE: With a signed site license and paid invoice for the Archivision Library fee, you will have the option to either 1) host the Library on your own server or 2) gain immediate access to it via the internet for your entire student population through payment of our annual Hosted Server Access Fees – and then DO NOTHING ON YOUR END. Perfect for those who do not yet have a delivery system in place at their institution. Take the Library back and host it on your server at any time. † Over 100,000 students, please ask for quote.

For complete information about the Archivision Library, access options,
end user site license, and optional hosted server services, please visit us at:

www.archivision.com

IMAGE SPECS AND UPGRADE FEES

CHART A

.: Archivision ready-made image specs with size totals for server/space considerations .:

BASE COLLECTION (16,000 IMAGES)	PER ADDITION MODULE (6,000 IMAGES)
TIFFs: 285 GB	TIFFs: 110 GB
FULL (3100) JPEG: 46 GB	FULL (3100) JPEG: 17 GB
MEDIUM (1500) JPEG: 10.5 GB	MEDIUM (1500) JPEG: 4 GB
MEDIUM (1200) JPEG: 7 GB	MEDIUM (1200) JPEG: 3 GB
MEDIUM (1024) JPEG: 5 GB	MEDIUM (1024) JPEG: 2 GB
MEDIUM (800) JPEG: 3.5 GB	MEDIUM (800) JPEG: 1.5 GB
THUMB (96) JPEG: 45 MB	THUMB (96) JPEG: 16 MB
Zoomify JPEG (3100): 35 GB	Zoomify JPEG (3100): 12 GB
JPEG 2000 (3100): 35 GB	JPEG 2000 (3100): 13 GB

CHART B

.: Archivision image types available and upgrade fees PER MODULE licensed .:

BASE COLLECTION (16,000 IMAGES)	PER ADDITION MODULE (6,000 IMAGES)
JPEG (any size on file) Included in fee	JPEG (any size on file) Included in fee
CUSTOM SIZE JPEGs \$375	CUSTOM SIZE JPEGs. \$250
TIFFs (large only) \$475	TIFFs (large only) \$325
JPEG 2000 (large only). \$300	JPEG 2000 (large only) \$250
Zoomify (large only) \$400	Zoomify (large only) \$300

CHART C

.: Archivision catalog records and pre-built collection fees PER MODULE licensed .:

BASE COLLECTION (16,000 IMAGES)	PER ADDITION MODULE (6,000 IMAGES)
Catalog records from VireoCat database* Included in fee	Catalog records from VireoCat database* Included in fee
MDID pre-built collection \$200	MDID pre-built collection \$100
Almagest pre-built collection \$200	Almagest pre-built collection \$100
EmbARK pre-built collection* \$300	EmbARK pre-built collection* \$150
Luna collection build** \$3,000	Luna collection build** \$1,500

Note: MDID/Almagest pre-built collections include a template chart, choice lists,
and metadata in csv files with step by step load instructions. EmbARK load files are EmbARK or ASCII.

Other fees:

Keep hard drive option: \$250 per drive shipped • Shipping: flat rate of \$75 per order

* You have the option to take the database loaded with our records & choice lists and catalog your new content with it at no additional fee. VireoCat is a free cataloging utility written in FileMaker Pro; license & support fees apply to EmbARK Cataloguer and Web Kiosk.

** Includes migration of Luna JPEG 2000 images & metadata to your server and a Luna collection build using the Archivision template. Please contract with Luna Imaging for this service and support at sales@luna-img.com.

METADATA AND PHOTOGRAPHIC DOCUMENTATION

Santa Maria dell'Assunzione – Ariccia, ITALY – by Bernini

WORK [RECORD]

source: Archivision, Inc.

AGENT

display: Gian Lorenzo Bernini (Italian architect, 1598-1680)
index:
agent:
name: Bernini, Gian Lorenzo
type: personal
vocab: ULAN
refid: 500032022
culture: Italian
agent date type: life
earliest date: 1598
latest date: 1680

DATE

display: 1662-1664
index:
type: creation
earliest date: 1662
latest date: 1664

DESCRIPTION

display: Scheme based on a circular plan and having a hemispherical dome rising straight from the cornice of the main walls. It is entered through a triple-arched and pedimented portico with pilasters. This remarkably pure combination of cylinder, hemisphere and portico was clearly inspired by Bernini's contemporary involvement with schemes to restore the Pantheon to its 'original' state. Patron: Pope Alexander VII (Chigi)
source: Grove Dictionary of Art Online. www.groveart.com (accessed 6 September 2007)

LOCATION

display: Ariccia (Lazio, Italy)
index:
location:
type: site
name: Ariccia
type: geographic
vocab: TGN
extent: inhabited place
refid: 7007011

MATERIAL

display: stone, stucco, fresco

STYLE PERIOD

display: Late Baroque
index:
style period: Late Baroque
vocab: AAT
refid: 300021151

SUBJECT

display: coffers (ceiling components); Mary, Blessed Virgin, Saint Assumption; dome: no pendentives; colonnade; portico; putti; angel; scroll; flower garlands; bell towers

index:
subject:
term: coffers (ceiling components)
type: descriptiveTopic
vocab: AAT
refid: 300002041
term: Mary, Blessed Virgin, Saint Assumption
type: iconographicTopic
vocab: LCSAF
refid: sh 85081699

TITLE

display: Santa Maria dell'Assunzione
index:
title: Santa Maria dell'Assunzione
type: cited
pref: true
title: Saint Mary of the Assumption
type: translated
xml:lang: en
pref: false

WORKTYPE

display: church
index:
worktype: church
vocab: AAT
refid: 300007466

IMAGE [RECORD]

id: 1A1-BG-SMA-A1
refid: 1A1-BG-SMA-A1.jpg
source: Archivision, Inc.

AGENT

display: Scott Gilchrist (1960-)
index:
agent:
name: Gilchrist, Scott
type: personal
dates: 1960-
type: life
earliest date: 1960
latest date: 0
culture: Canadian
role: photographer

RELATION

index:
relation: Santa Maria dell'Assunzione
type: imageOf
relids: w_1A1-BG-SMA

RIGHTS

display: All images © Scott Gilchrist, Archivision, Inc.
index:
rights:
rights holder: Scott Gilchrist; <http://www.archivision.com/>
text: All rights reserved

SOURCE

display:
index:
source:
name: Archivision, Inc.
type: vendor
refid: 1A1-BG-SMA-A1

SUBJECT

display: dome: no pendentives, colonnades, porticoes, pediment, Ariccia, piazza, bell towers

index:
subject:
term: colonnades
type: descriptiveTopic
vocab: AAT
refid: 300002613
term: porticoes
type: descriptiveTopic
vocab: AAT
refid: 300004145
term: bell towers
type: descriptiveTopic
vocab: AAT
refid: 300004848

TITLE

display: Context view, showing location of the church in the Medieval town of Ariccia

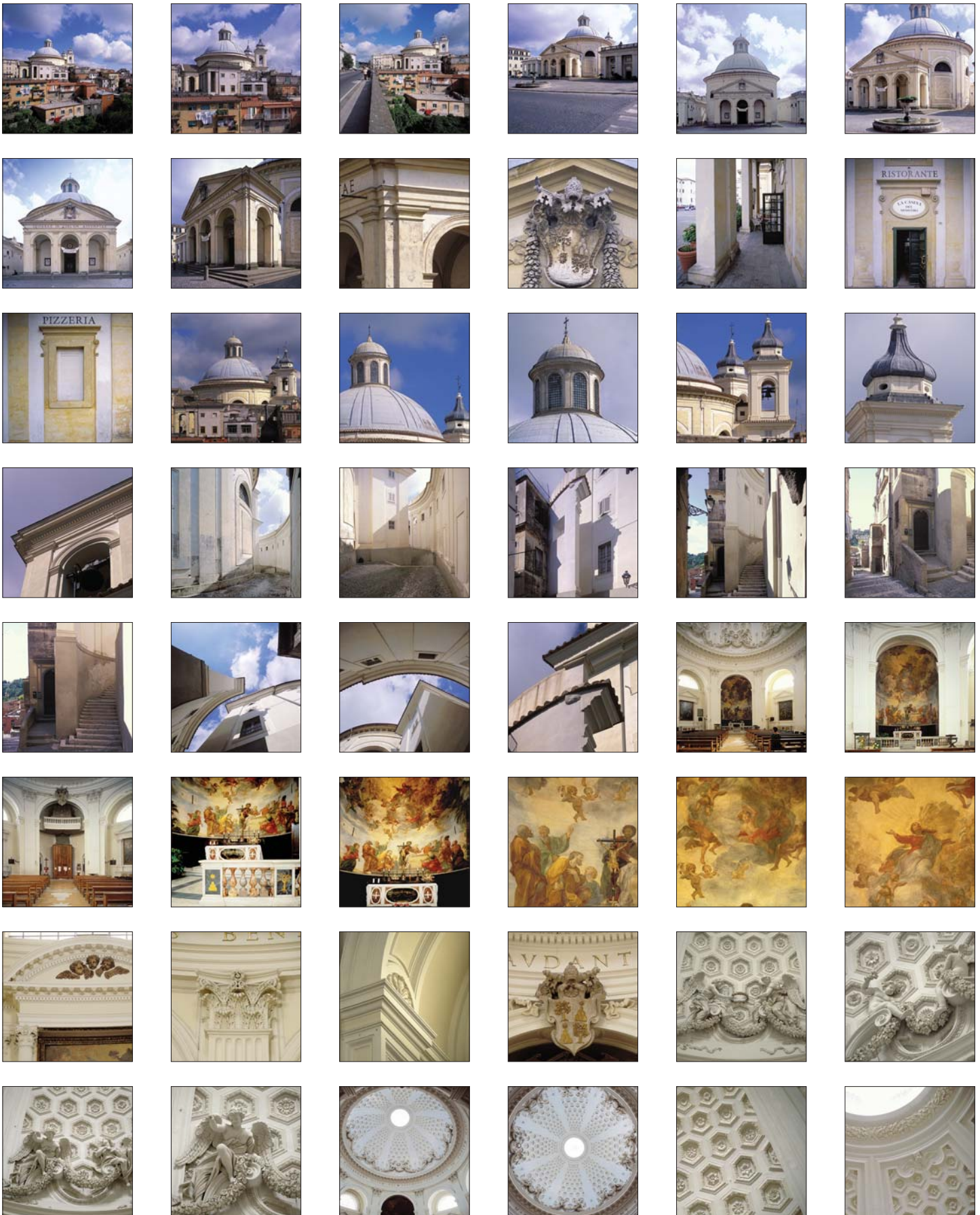
index:
title: Context view, showing location of the church in the Medieval town of Ariccia
type: generalView
pref: true

WORKTYPE

display: digital image
index:
worktype: digital image
vocab: AAT
refid: 300215302

► Sample record showing VRA Core 4 XML-compliant data. Data is also available in csv (comma separated values) format and can be mapped as needed.

► Our photographic documentations are the most extensive available from any source.



Architecture & Art by Architect / Artist

- 1B1-AA-BH :: Aalto, Alvar:
:: Baker House (16)
- 1A1-AS-AB :: Adler and Sullivan:
:: Auditorium Building (58)
- 1A1-AR-PB :: Affleck, Raymond Tait:
:: Place Bonaventure (14)
- 1A1-AL-PR :: Alberti, Leon Battista:
:: Palazzo Rucellai (25)
- 1A1-AL-CR :: Rucellai Chapel (12)
- 1A1-AL-LR :: Rucellai Loggia (4)
- 1A1-AL-SS :: San Sebastiano (25)
- 1A1-AL-SM :: Santa Maria Novella (47)
- 1A1-AL-SA :: Sant'Andrea (27)
- 1A1-AB-FN :: Ammanati, Bartolomeo:
:: Fountain of Neptune (58)
- 1A1-AB-PR :: Palazzo Riccardi-Mannelli (14)
- 1A1-AB-PT :: Ponte Santa Trinità (24)
- 1A1-AG-MO :: Aulenti, Gaetana:
:: Musée d'Orsay (22)
- 1A1-LB-IB :: Barnes, Edward Larrabee:
:: IBM Building Atrium (7)
- 1A1-BE-TM :: Beaudouin, Eugène Elie:
:: Tour Montparnasse (2)
- 1A1-BS-FA :: Beman, Solon Spencer:
:: Fine Arts Building (Rookery Building) (9)
- 1A1-BG-CA :: Bernini, Gian Lorenzo:
:: Altieri Chapel (2)
- 1A1-BG-ASA :: Angels in Sant'Andrea delle Fratte (9)
- 1A1-BG-SP :: Chigi Chapel in Siena Cathedral (17)
- 1A1-BG-CC :: Cornaro Chapel (52)
- 1A1-BG-CF :: Fonseca Chapel (31)
- 1A1-BG-FB :: Fontana della Barcaccia (10)
- 1A1-BG-FA :: Fontana delle Api (9)
- 1A1-BG-FCG :: Fountain at Castel Gandolfo (3)
- 1A1-BG-FQ :: Fountain of the Four Rivers (59)
- 1A1-BG-FT :: Fountain of Triton (18)
- 1A1-BG-OS :: Minerva Obelisk (17)
- 1A1-BG-PC :: Palazzo Chigi-Odescalchi (16)
- 1A1-BG-PQP :: Palazzo del Quirinale: Benediction L. (8)
- 1A1-BG-PM :: Palazzo di Montecitorio (18)



1A1-AG-MO-C3 / Musée D'Orsay, Paris, by Gaetana Aulenti



1A1-AL-CR-B3



1A1-AL-PR-B1



1A1-AL-SM-B3



1A1-BG-ASA-A4



1A1-BG-CA-A1



1A1-BG-FQ-B3



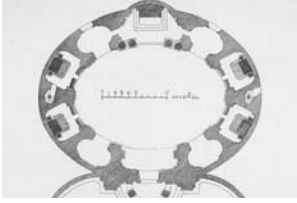
1A1-BG-CR-E2 / Raimondi Chapel, by Gian Lorenzo Bernini



1A1-BG-CC-D7 / Cornaro Chapel



1A1-BG-CC-G4 / Cornaro Chapel



1A1-BG-SA-AA1



1A1-BG-CR-C2 / Raimondi Chapel, Rome



1A1-BG-SMA-A6

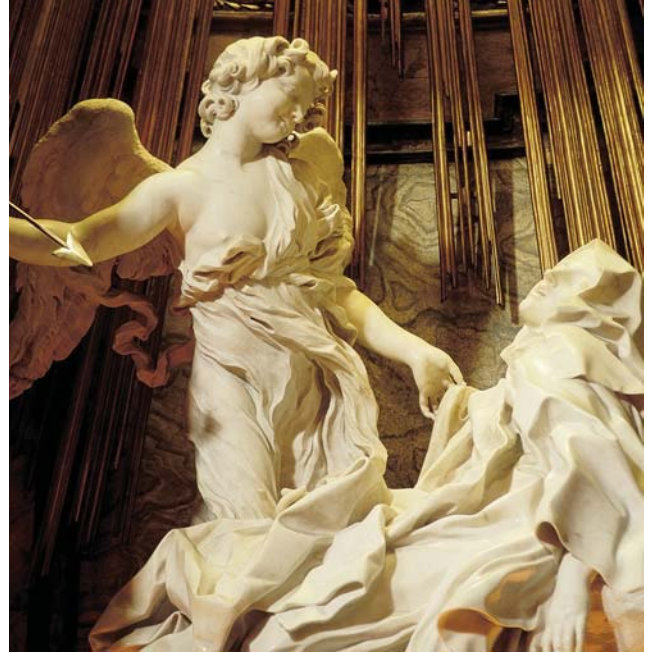
BERNINI



1A1-BG-SA-B7



1A1-BG-PS-A3 / Saint Peter's Square, Rome



1A1-BG-CC-B4 / Cornaro Chapel, Rome



1A1-BG-SA-D3 / Sant'Andrea al Quirinale, Rome



1A1-BG-CC-D2 / Cornaro Chapel



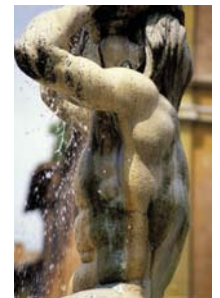
1A1-BG-CC-C4 / Cornaro Chapel



1A1-BG-FQ-C6



1A1-BG-SR-CC1



1A1-BG-FT-B5

BERNINI, continued

- 1A1-BG-PA :: Ponte Sant'Angelo Angels (12)
- 1A1-BG-PP :: Porta del Popolo (6)
- 1A1-BG-CR :: Raimondi Chapel (31)
- 1A1-BG-PS :: Saint Peter's: Square (46)
- 1A1-BG-ST :: San Tommaso di Villanova (34)
- 1A1-BG-SB :: Santa Bibiana (7)
- 1A1-BG-SMA :: Santa Maria dell'Assunzione (56)
- 1A1-BG-SA :: Sant'Andrea al Quirinale (38)
- 1A1-BG-SR :: Scala Regia (1)
- 1A1-BG-TJV :: Tomb of Giovanni Vigevano (7)



1A1-BG-SMA-I6 / Santa Maria dell'Assunzione, Ariccia

Bofill, Ricardo:

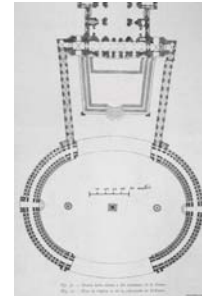
- 1A1-BR-PC :: Place de Catalogne (14)

Borromini, Francesco:

- 1A1-BF-CP :: Collegio di Propaganda Fide (29)
- 1A1-BF-OP :: Oratory of Saint Philip Neri (34)
- 1A1-BF-PB :: Palazzo Barberini Window (3)
- 1A1-BF-PF :: Palazzo Falconieri (12)
- 1A1-BF-PSC :: Palazzo Spada: Colonnade (5)
- 1A1-BF-SG-1 :: Saint John Lateran: Nave (44)
- 1A1-BF-SG-2 :: Saint John Lateran: Side Aisles & Chapels (29)
- 1A1-BF-SG-3 :: Saint John Lateran: Cherubs in Side Aisles (19)
- 1A1-BF-SG-4 :: Saint John Lateran: Tombs (35)
- 1A1-BF-SC :: San Carlo alle Quattro Fontane: Church (49)
- 1A1-BF-SCM :: San Carlo alle Quattro Fontane: Monastery (29)
- 1A1-BF-SM :: Santa Maria dei Sette Dolori (5)
- 1A1-BF-SA :: Sant'Agnese in Agone (21)
- 1A1-BF-SF :: Sant'Andrea delle Fratte (16)
- 1A1-BF-SI :: Sant'Ivo della Sapienza (60)



1A1-BG-OS-A3



1A1-BG-PS-AA2



1A1-BG-SA-A4



1A1-BG-SMA-B2



1A1-BG-SMA-F2



1A1-BF-CP-B3

Botta, Mario:

- 1A1-BO-SFM :: San Francisco Museum of Modern Art (8)



1A1-BF-SCM-A4



1A1-BF-SI-F5

Bramante, Donato:

- 1A1-BD-B :: Belvedere (44)
- 1A1-BD-SM :: Santa Maria della Pace: Cloister (16)

Breuer, Marcel Lajos:

- 1A1-BM-U :: UNESCO Headquarters (27)

Brunelleschi, Filippo:

- 1A1-BFI-DF :: Florence Cathedral: Dome (31)
- 1A1-BFI-OI :: Ospedale degli Innocenti (38)
- 1A1-BFI-PP :: Palazzo di Parte Guelfa (5)



1A1-BF-SC-B6



1A1-BF-SCM-B1



1A1-BF-SCM-E3



1A1-BF-SG-1-D4



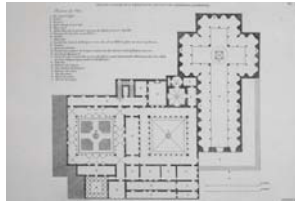
1A1-BF-SG-1-F10



1A1-BF-SG-4-B1



1A1-BO-SFM-A2



1A1-BFI-SS-AA1



1A1-BFI-CP-2-B3 / Pazzi C.



1A1-BFI-CP-4-A7 / Pazzi C.



1A1-BFI-SL-B1 / San Lorenzo



1A1-BR-RB-C1 / Rookery B.



1A1-MB-C-C6



1A1-MB-D-D2



1A1-MB-LL-E3



1A1-MB-SN-D3 / New Sacristy



1A1-MB-SN-E2 / New Sacristy

BRUNELLESCHI, continued

- 1A1-BFI-CP-2 :: Pazzi Chapel: Interior (27)
- 1A1-BFI-CP-3 :: Pazzi Chapel: Interior Details (22)
- 1A1-BFI-CP-4 :: Pazzi Chapel: Interior Dome (12)
- 1A1-BFI-CP-5 :: Pazzi Chapel: Interior Medallions (6)
- 1A1-BFI-CP-6 :: Pazzi Chapel: Drawings (5)
- 1A1-BFI-SL :: San Lorenzo: Overview (33)
- 1A1-BFI-SV :: San Lorenzo: Old Sacristy (9)
- 1A1-BFI-SA :: Santa Maria degli Angeli (3)
- 1A1-BFI-SS :: Santo Spirito (33)

Bulfinch, Charles:

- 1A1-BCH-SH :: Massachusetts State House (12)
- 1A1-BCH-SS :: Saint Stephen (10)

Buonarroti, Michelangelo:

- 1A1-MB-BS :: Belvedere Stairway (11)
- 1A1-MB-D :: David (copy) (39)
- 1A1-MB-LL :: Laurentian Library (40)
- 1A1-MB-C :: Piazza del Campidoglio (135)
- 1A1-MB-PP :: Porta Pia (40)
- 1A1-MB-RC :: Risen Christ (7)
- 1A1-MB-SPS :: Saint Peter's: Side Elevation & Apse (18)
- 1A1-MB-SPD :: Saint Peter's: Main Dome (12)
- 1A1-MB-SN :: San Lorenzo: New Sacristy (19)
- 1A1-MB-CS :: Sforza Chapel (9)
- 1A1-MB-TJ :: Tomb of Julius II (56)

Burnham and Root:

- 1A1-BR-RB :: Rookery Building (65)

Burnham, Daniel Hudson:

- 1A1-BC-FA :: Fisher Building (4)
- 1A1-BC-MF :: Marshall Field and Company Store (6)
- 1A1-BR-MB :: Monadnock Building (11)
- 1A1-BC-OH :: Orchestra Hall (2)
- 1A1-BC-RE :: Railway Exchange Building (7)
- 1A1-BC-RB :: Reliance Building (14)

Calatrava Valls, Santiago:

- 1A1-CS-BC :: BCE Place Galleria (28)

Cardinal, Douglas J.:

- 1A1-CD-CM :: Canadian Museum of Civilization (31)
- 1A1-CD-YR :: York Region Administrative Centre (20)

Chareau, Pierre:

- 1A1-CP-MV :: Maison de Verre (13)

1A1-CPA-ME Chemetov, Paul:
:: Ministère de l'Economie et Finances (10)



1A1-MB-RC-A3



1A1-MB-TJ-C3



1A1-MD-PM-D1

1A1-CPD-SP Cortona, Pietro da:
:: Santa Maria della Pace:
Church & Piazza (29)
1A1-CPD-SV :: Santa Maria in via Lata (46)
1A1-CPD-SL :: Santi Martina e Luca (21)

1A1-EA-CE Erickson, Arthur Charles:
:: Canadian Embassy (19)



1A1-FA-CS Fainsilber, Adrien:
:: Cité des Sciences et de l'Industrie (7)



1A1-BR-RB-K2 / Rookery



1A1-CS-BC-DD3 / BCE Place

1A1-FD-CS Fontana, Domenico:
:: Santa Maria Maggiore:
Cappella Sistina (16)

1A1-UF-PM Franzen, Ulrich Joseph:
:: Philip Morris Headquarters (3)



1A1-CP-MV-B5



1A1-CPD-SV-A1



1A1-GAN-CA-B2

1A1-FF-CB Furness, Frank:
:: Centennial National Bank (2)
1A1-FF-GS :: Gravers Lane Station (4)

1A1-GF-AC Gehry, Frank Owen:
:: American Center (9)
1A1-GF-CA :: Chiat Administration Center (16)
1A1-GF-EM :: Experience Music Project (85)
1A1-GF-GH :: Gehry House (12)
1A1-GF-MD :: McDonnell Douglas
Engineering Auditorium (14)
1A1-GF-UCI :: UCI Administration Building (9)



1A1-GF-AC-A2



1A1-GF-CA-B4



1A1-GF-EM-B3

1A1-GAN-CA Gherardi, Antonio:
:: Cappella Avila (10)

1A1-GDB-SCG Giotto:
:: Santa Croce Fresco
Fragments (Nave) (4)

1A1-BFI-CP-1 Giuliano da Maiano:
:: Pazzi Chapel: Portico (23)



1A1-GF-EM-E8 / Experience Music Project, by Frank Gehry



1A1-HW-ES-C7



1A1-MB-CP-C4



1A1-GB-MC-A3



1A1-GGU-SL-F6 / San Lorenzo



1A1-GGU-SL-F7 / San Lorenzo



1A1-GW-PA-A2



1A1-HR-CB-A2



1A1-HH-TT-A1



1A1-HR-MB-D2 / Marquette B.



1A1-HR-MB-D7 / Marquette B.



1A1-HR-PB-A3 / Pontiac B.



1A1-HR-WA-A2 / Wiebolt's A.



1A1-JH-SC-A2 / State of Illinois Center, Chicago, by H. Jahn

1A1-GB-MC
1A1-GB-PW
1A1-GB-RC

Goldberg, Bertrand:
:: Marina City (11)
:: Prentice Women's Hospital (4)
:: River City (5)

1A1-GAP-US
1A1-GAP-WB

Graham, Anderson, Probst:
:: Union Station (4)
:: Wrigley Building (3)

1A1-GB-CC

Granger & Bollenbacher:
:: Chicago Club Building (2)

1A1-GW-PA

Gropius, Walter:
:: Pan Am Building (6)

1A1-GT-SC

Gruppo Toscano:
:: Stazione Centrale (11)

1A1-GGU-CS
1A1-GGU-SL

Guarini, Guarino:
:: Cappella del Santissimo Sudario (1)
:: San Lorenzo (37)

1A1-GH-AJC

Guimard, Hector:
:: Atelier de Jean-Baptiste Carpeaux (9)

1A1-MB-CP

Hammond, Beeby, and Babka Inc.:
:: Chicago Public Library (new) (15)

1A1-HW-ES

Harrison, Wallace K.:
:: Empire State Plaza (32)

1A1-HR-CB
1A1-HR-MB
1A1-HR-OC
1A1-HR-PB
1A1-HR-WA

Holabird & Roche:
:: Chicago Building (3)
:: Marquette Building (24)
:: Old Colony Building (3)
:: Pontiac Building (3)
:: Wiebolt's Annex (3)

1A1-HH-TT

Hood & Howells:
:: Tribune Tower (24)

1A1-JH-SC

Jahn, Helmut:
:: State of Illinois Center (6)



1A1-JT-UV-2-A4 / colonnades



1A1-JT-UV-4-E4 / south gardens off colonnade



1A1-JT-UV-1-B1 / Rotunda

THOMAS JEFFERSON — University of Virginia



1A1-JT-UV-1-B3 / Rotunda, east elevation



1A1-JT-UV-2-H7



1A1-JT-UV-1-F6 / Rotunda (library)



1A1-JT-UV-2-B9 / colonnade



1A1-JT-UV-2-H2 / colonnade



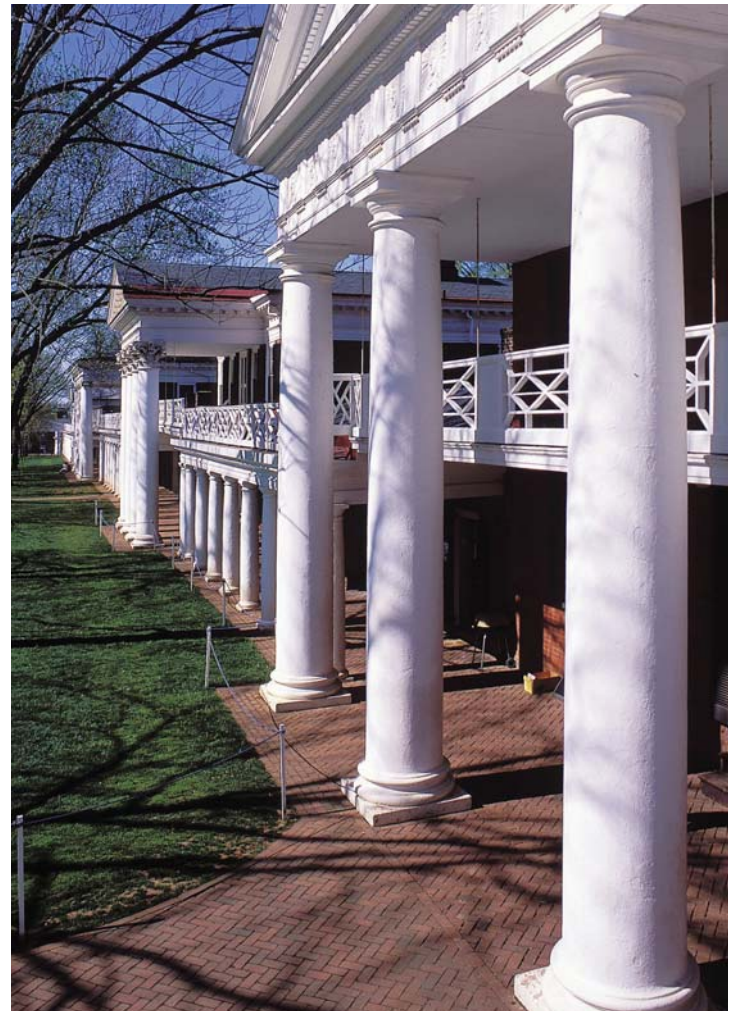
1A1-JT-UV-2-H5



1A1-JT-UV-2-C3



1A1-JT-UV-2-D2



1A1-JT-UV-2-B8 / North Colonnade



1A1-JP-AT-A2



1A1-KL-EL-E1



1A1-KL-SI-C1



1A1-KL-UC-B3



1A1-KL-YA-C2



1A1-KP-IB-B4



1A1-LC-VS-B2 / Villa Savoye



1A1-LC-VS-I5 / Villa Savoye



1A1-LC-CR-D2



1A1-LC-PS-B4



1A1-LC-UHM-1-B3



1A1-LC-UHM-2-H1



1A1-LCN-BM-A6



1A1-LCN-SW-3-A4

- Jefferson, Thomas:
- 1A1-JT-M :: Monticello: House (34)
 - 1A1-JT-ML :: Monticello: Landscape (41)
 - 1A1-JT-UV-1 :: University of Virginia: Rotunda (55)
 - 1A1-JT-UV-2 :: University of Virginia: Colonnade (73)
 - 1A1-JT-UV-3 :: University of Virginia: Student Residence (8)
 - 1A1-JT-UV-4 :: University of Virginia: East Pavilion Gardens (38)
 - 1A1-JT-UV-5 :: University of Virginia: West Pavilion Gardens (23)
 - 1A1-JT-UV-6 :: University of Virginia: Saint Paul's Memorial Church (8)
 - 1A1-JT-UV-7 :: University of Virginia: Jefferson Memorial (6)

- Jenney, William Le Baron:
- 1A1-JW-MB :: Manhattan Building (6)
 - 1A1-JM-SL :: Second Leiter Building (9)

- Johnson, Philip:
- 1A1-JP-AT :: AT&T Headquarters (11)
 - 1A1-JP-BP :: Boston Public Library Addition (4)
 - 1A1-JP-CB :: CBC Broadcasting Centre (12)
 - 1A1-JP-PPG :: PPG Headquarters (9)

- Jones & Kirkland, Architects:
- 1A1-JK-MC :: Mississauga City Hall (72)

- Kahn, Louis Isidore:
- 1A1-KL-EH :: Esherick House (8)
 - 1A1-KL-ELD :: Exeter Academy Dining Hall (31)
 - 1A1-KL-EL :: Exeter Academy Library (56)
 - 1A1-KL-ML :: Richards Medical Laboratories (16)
 - 1A1-KL-SI :: Salk Institute for Biological Studies (60)
 - 1A1-KL-UC :: Unitarian Church (27)
 - 1A1-KL-YA :: Yale University Art Gallery (15)
 - 1A1-KL-YC :: Yale Center for British Art (25)

- Kallmann, McKinnell & Knowles:
- 1A1-KM-BC :: Boston City Hall (14)

- Kohn Pedersen Fox Associates:
- 1A1-KP-BA :: Buffalo Niagara International Airport (11)
 - 1A1-KP-IB :: IBM-Marathon (43)

- Labrouste, Henri:
- 1A1-LH-BS :: Bibliothèque Ste-Geneviève (14)

Le Corbusier:

- 1A1-LC-CR :: Cité de Refuge (31)
- 1A1-LC-O :: Ozenfant House and Studio (9)
- 1A1-LC-PB :: Pavillon du Brésil (29)
- 1A1-LC-PS :: Pavillon Suisse (32)
- 1A1-LC-R :: Ronchamp (70)
- 1A1-LC-UHM-1 :: Unité d'Habitation: Building (41)
- 1A1-LC-UHM-2 :: Unité d'Habitation: Roof (80)
- 1A1-LC-VS :: Villa Savoye (91)



1A1-LCN-SW-4-B1



1A1-LCN-SW-7-C1



1A1-LCN-M-A2

Ledoux, Claude-Nicolas:

- 1A1-LCN-BV :: Barrière de la Villette (6)
- 1A1-LCN-BM :: Barrières Models (12)
- 1A1-LCN-M :: Ledoux Models (5)
- 1A1-LCN-SW-1 :: Saltworks: Gatehouse (29)
- 1A1-LCN-SW-2 :: Saltworks: General Views (15)
- 1A1-LCN-SW-3 :: Saltworks: Director's Residence (24)
- 1A1-LCN-SW-4 :: Saltworks: Director's Stables (13)
- 1A1-LCN-SW-5 :: Saltworks: Salt Storehouses (16)
- 1A1-LCN-SW-6 :: Saltworks: Clerk's Building (6)
- 1A1-LCN-SW-7 :: Saltworks: Excise Building (13)
- 1A1-LCN-SW-8 :: Saltworks: Utility Buildings (28)
- 1A1-LCN-SW-9 :: Saltworks: Oculus Window & Saline (10)
- 1A1-LCN-SW-10 :: Saltworks: Model (1)



1A1-LCN-M-A3 / Ledoux Models

Ligorio, Pirro:

- 1A1-LP-CP :: Casino of Pius IV (28)
- 1A1-LP-VE :: Villa d'Este (78)

Loos, Adolf:

- 1A1-LA-MT :: Maison Tzara (4)

L'Orme, Philibert de:

- 1A1-DL-A :: Château d'Anet (3)

Lurçat, André:

- 1A1-LAN-VG :: Villa Guggenbuhl (6)

Mackintosh, Charles Rennie:

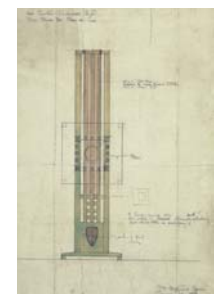
- 1B1-MCR-1 :: Mackintosh: Sketches in Italy (76)
- 1B1-MCR-2 :: Mackintosh: Sketches in England (9)
- 1B1-MCR-3 :: Mackintosh: Graphic Work (16)
- 1B1-MCR-4 :: Mackintosh: Furniture Drawings (28)
- 1B1-MCR-5 :: Mackintosh: London Phase (20)
- 1B1-MCR-6 :: Mackintosh: Watercolors and Flower Studies (8)
- 1B1-MCR-MF :: Mackintosh: Miscellaneous Furniture (22)
- 1A1-MCR-PMM :: Photos of Mackintosh & Wife (2)



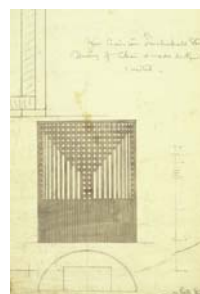
1B1-MCR-3-A11



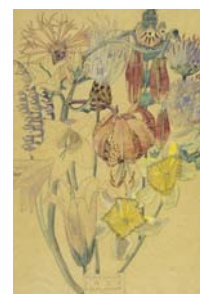
1B1-MCR-6-A3



1B1-MCR-4-A4



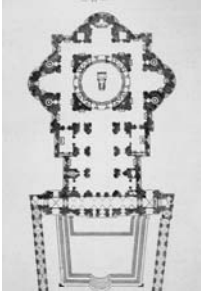
1B1-MCR-4-A27



1B1-MCR-6-A6



1B1-MCR-1-A17



1A1-MC-SPF-AA1



1A1-MD-PM-D1



1A1-VG-PVC-D1

1A1-MC-SPF
1A1-MC-SS

Maderno, Carlo:
:: Saint Peter's: Façade (42)
:: Santa Susanna (12)

1A1-MM-BP
1A1-MM-VH

McKim, Mead, and White:
:: Boston Public Library (40)
:: Villard Houses (6)

1A1-MR-CH

Meier, Richard:
:: Canal+ Headquarters (18)



1A1-MR-CH-B1 / Canal+ Headquarters, by R. Meier

1A1-MD-PM
1A1-VG-PVC
1A1-MD-SA

Michelozzo di Bartolomeo:
:: Palazzo Medici-Riccardi (29)
:: Palazzo Vecchio: Court (14)
:: Santissima Annunziata (14)

1A1-MVR-BP
1A1-MVR-CH
1A1-MVR-FC
1A1-MVR-HH
1A1-MVR-IB
1A1-MVR-II
1A1-MVR-LS
1A1-MVR-OC
1A1-MVR-OI
1A1-MVR-PA
1A1-MVR-SB
1A1-MVR-TD
1A1-MVR-TH

Mies van der Rohe, Ludwig:
:: Barcelona Pavilion (4)
:: Crown Hall (18)
:: Federal Center (11)
:: Highfield House Condominium (5)
:: IBM Building (4)
:: Illinois Institute of Technology (42)
:: Lake Shore Drive Apartments (24)
:: One Charles Center (1)
:: One Illinois Center (3)
:: Promontory Apartments (10)
:: Seagram Building (17)
:: Toronto Dominion Centre (23)
:: Tugendhat House (1)



1A1-MVR-CH-A4 / Crown Hall, by Mies

Moretti, Luigi:
:: Tour Victoria (8)

1A1-ML-TV



1A1-MVR-LS-A1



1A1-MVR-FC-B4



1A1-MVR-FC-B2

1A1-MA-DC

Murphy Assoc.:
:: Daley Center (6)

1A1-NJ-RS

Nash, John:
:: Regent Street (51)

1A1-NR-NC

Neutra, Richard Joseph:
:: Neutra Colony (18)



1A1-NO-B-1-C5



1A1-NO-B-1-F3



1A1-NO-B-1-K4

1A1-NO-B-1
1A1-NO-B-2
1A1-NO-B-4
1A1-NO-B-5
1A1-NO-B-7
1A1-NO-ME
1A1-NO-SP

Niemeyer, Oscar:
:: Brasilia: Administrative Center (60)
:: Brasilia: Alvorada Palace and Chapel (3)
:: Brasilia: Metropolitan Cathedral (14)
:: Brasilia: Chapel of Our Lady Fatima (8)
:: Brasilia: Military Center (10)
:: Ministry of Education and Health (21)
:: Siège du Parti Communiste Français (9)

- 1A1-NJ-IM **Nouvel, Jean:**
 :: Institut du Monde Arabe (40)
- 1A1-OC-OB **Ott, Carlos:**
 :: Opéra de la Bastille (9)
- 1A1-PA-IR **Palladio, Andrea:**
 :: Il Redentore (33)
 1A1-PA-TO :: Teatro Olimpico (14)
 1A1-PA-TB :: Tempietto Barbaro (28)
 1A1-PA-VA :: Villa Rotonda (46)
- 1A1-PI-NG **Pei, I. M.:**
 :: National Gallery of Art (East Building) (9)
 1A1-PI-PL :: Pyramide du Louvre (37)
 1A1-PI-WT :: World Trade Center Baltimore (4)
- 1A1-DP-IG **Porta, Giacomo della:**
 :: Il Gesù: Facade (42)
- 1A1-PJ-PC **Portman, John:**
 :: Peachtree Center (13)
- 1A1-PCD-CM **Portzamparc, Christian Urvoy de:**
 :: Cité de la Musique (14)
- 1A1-PAN-SI **Pozzo, Andrea:**
 :: Sant'Ignazio: Choir & Vault Frescos (37)
- 1A1-RC-SC **Rainaldi, Carlo:**
 :: Santa Maria in Campitelli (34)
- 1A1-RS-PP **Raphael:**
 :: Palazzo Pandolfini (15)
- 1A1-RH-RC **Reinhard & Hofmeister:**
 :: Rockefeller Center (90)
- 1A1-RV-TC **Revell, Viljo:**
 :: Toronto City Hall (37)
- 1A1-RHH-GH **Richardson, Henry Hobson:**
 :: Glessner House (15)
- 1A1-RK-FF **Roche, Kevin:**
 :: Ford Foundation Building (4)
- 1A1-RP-CG **Rogers and Piano:**
 :: Centre Georges Pompidou (37)



1A1-PA-TO-C3



1A1-PA-IR-A5



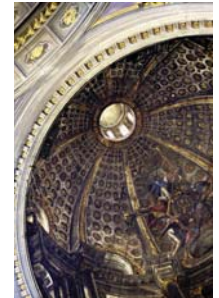
1A1-PA-VA-F1



1A1-PAN-SI-A4



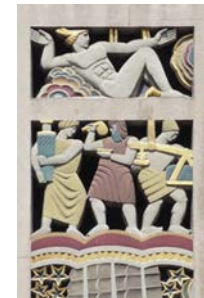
1A1-PAN-SI-C3



1A1-PAN-SI-F2



1A1-RH-RC-G5



1A1-RH-RC-H6



1A1-RH-RC-O3



1A1-RV-TC-B4 / Toronto City Hall, by V. Revell



1A1-RP-CG-A2 / Center Georges Pompidou, by Rogers & Piano



1A1-RB-PP-A2 / Piazza Pio II, Pienza, by B. Rossellino



1A1-SO-TWA-C9



1A1-SM-NG-E2



1A1-SM-OC-C1



1A1-SN-TF-EE1



1A1-SNO-BA-G6

- 1A1-RR-LL :: Rogers, Richard:
:: Lloyd's of London (14)

- 1A1-RP-CC :: Rose, Peter:
:: Canadian Centre for Architecture (44)

- 1A1-RB-PP :: Rossellino, Bernardo:
:: Piazza Pio II (71)

- 1A1-RA-EH :: Rossi, Aldo:
:: Ensemble d'Habitation (2)

- 1A1-SO-CB :: Saarinen, Eero:
:: CBS Building (3)
- 1A1-SO-KC :: Kresge Chapel (11)
- 1A1-SO-TWA :: TWA Terminal (36)

- 1A1-SM-H :: Safdie, Moshe:
:: Habitat '67 (16)
- 1A1-SM-MB :: Musée des Beaux-Arts de Montréal (70)
- 1A1-SM-NG :: National Gallery of Canada (33)
- 1A1-SM-OC :: Ottawa City Hall (20)

- 1A1-SN-TF :: Salvi, Nicola:
:: Trevi Fountain (54)

- 1A1-SA-PF :: Sangallo, Antonio da, the younger:
:: Palazzo Farnese (42)

- 1A1-SG-PG :: Sangallo, Giuliano da:
:: Palazzo Gondi (16)

- 1A1-SH-S :: Sauvage, Henri:
:: Samaritaine (13)

- 1A1-SRC-CP :: Shepley, Rutan & Coolidge:
:: Chicago Public Library (old) (2)

- 1A1-SLH-ES :: Shreve, Lamb & Harmon Associates:
:: Empire State Building (17)

- 1A1-SOM-BA :: Skidmore, Owings & Merrill:
:: Bank of America World Headquarters (9)
- 1A1-SOM-CM :: Chase Manhattan Bank Tower (13)
- 1A1-SOM-CG :: Crocker Galleria (3)
- 1A1-SOM-IS :: Inland Steel (9)
- 1A1-SOM-JH :: John Hancock Center (18)
- 1A1-SOM-LH :: Lever House (17)
- 1A1-SOM-ST :: Sears Tower (20)

- 1A1-SNO-BA :: Snohetta:
:: Bibliotheca Alexandrina (88)
- 1A1-SJ-GA :: Spreckelsen, Johann-Otto von:
:: Grande Arche (38)
- 1A1-SE-SO :: Stone & The Perkins & Will Partnership:
:: Standard Oil Building (6)
- 1A1-HS-CC :: Stubbins, Hugh Asher:
:: Citicorp Center (9)
- 1A1-SL-CP :: Sullivan, Louis H.:
:: Carson Pirie Scott Store (54)
- 1A1-SL-GB :: Gage Building (14)
- 1A1-SL-GT :: Getty Tomb (38)
- 1A1-SL-ST :: Sullivan's Tomb (3)
- 1A1-TR-OC :: Taillibert, Roger:
:: Parc Olympique de Montréal (56)
- 1A1-TK-EE :: Tange, Kenzo:
:: Ensemble d'Équipements (2)
- 1A1-VW-CB :: Van Alen, William:
:: Chrysler Building (29)
- 1A1-VG-CV :: Vasari, Giorgio, II:
:: Corridoio Vasariano (5)
- 1A1-VG-PU :: Palazzo degli Uffizi (27)
- 1A1-VG-MT :: Tomb of Michelangelo (19)
- 1A1-VRB-FP :: Venturi, Robert:
:: Freedom Plaza (11)
- 1A1-VGB-VF :: Vignola, Jacopo da:
:: Villa Farnese (33)
- 1A1-WJ-RC :: Wood, John, the younger:
:: Royal Crescent
- 1A1-WFL-GM :: Wright, Frank Lloyd:
:: Guggenheim Museum (40)
- 1A1-WFL-MCC :: Marin County Civic Center (10)
- 1A1-WFL-RH :: Robie House (45)
- 1A1-WFL-WH :: Winslow House (8)
- 1A1-YM-WT :: Yamasaki, Minoru:
:: World Trade Center (27)



1A1-SOM-JH-B1



1A1-SOM-ST-A6



1A1-SNO-BA-C1



1A1-SNO-BA-I3 / Bibliotheca A.



1A1-SJ-GA-A6 / Grande Arche



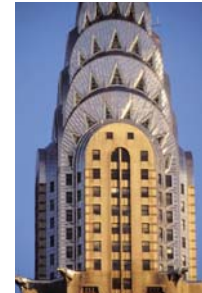
1A1-SL-CP-I5 / Carson P. S.



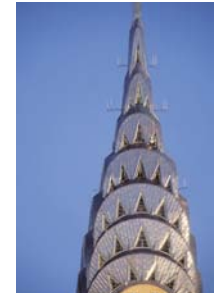
1A1-SL-CP-I6 / Carson P. S.



1A1-VW-CB-F1



1A1-VW-CB-F4



1A1-VW-CB-F5



1A1-WFL-GM-A2 / Guggenheim Museum, by F.L. Wright



1A1-WFL-GM-G5 / Guggenheim Museum, by F.L. Wright



1A1-SNO-BA-B3



1A1-SNO-BA-I5 / The Great Hall



1A1-SNO-BA-E1

SNOHETTA – Bibliotheca Alexandrina



1A1-SNO-BA-A4 / the reflecting pool



1A1-SNO-BA-B7 / entry area



1A1-SNO-BA-H4 / Bibliotheca Alexandrina, lobby interior



1A1-SNO-BA-G9



1A1-SNO-BA-B11



1A1-SNO-BA-I13



1A1-SNO-BA-F12



1A1-SNO-BA-F7



1A2-F-G-FCP-B2



1A2-F-G-FCP-E1 / Chateau de St-Germain-en-Laye, from the formal garden



1A2-F-G-FCP-E3

FRANCE – Creative Photoshop



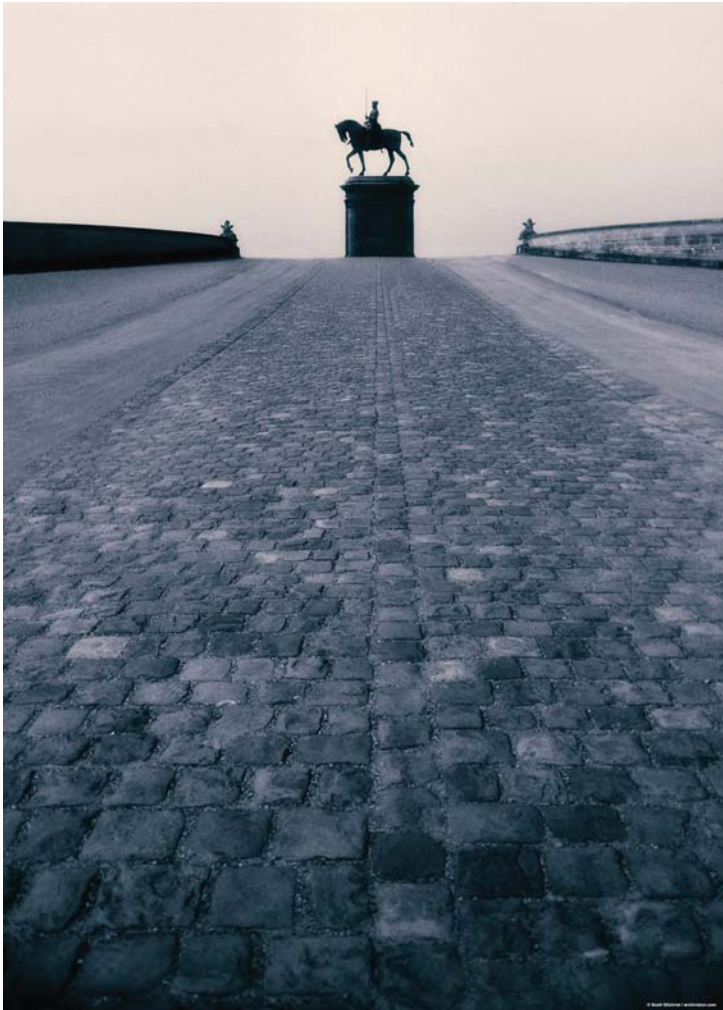
1A2-F-G-FCP-C2



1A2-F-G-FCP-A1 / Château de Chantilly



1A2-F-G-FCP-D1 / Monet's Garden – the lilly pond



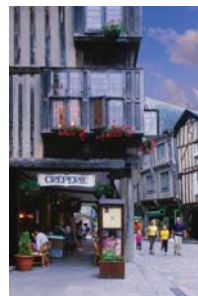
1A2-F-G-FCP-A2 / Château de Chantilly



1A2-F-G-FCP-D2 / the garden



1A2-F-G-FCP-D3 / the garden



1A2-F-G-FCP-E2



1A2-F-G-FCP-A3



1A2-F-G-FCP-B5



1A2-C-LN-LNO-A5 / Lunenburg



1A2-F-AM-AC-2-A4



1A2-F-AM-AC-2-C2



1A2-F-AM-AC-2-D6



1A2-F-CWV-3-B4 / Vaux-le-Vicomte: Gardens



1A2-F-CVV-3-A2



1A2-F-VR-9-A4



1A2-F-VZ-VZC-B5



1A2-F-P-ND-1-B1



1A2-F-P-ND-1-F2



1A2-F-P-ND-1-J2

Architecture & Art by Country

Canada: Nova Scotia:

- 1A2-C-H-AG :: Art Gallery of Nova Scotia (9)
- 1A2-C-CP-EM :: Église Ste-Marie (12)
- 1A2-C-H-GH :: Government House (9)
- 1A2-C-H-HC :: Halifax Citadel (13)
- 1A2-C-LN-LNO :: Lunenburg (34)
- 1A2-C-MB-MBO :: Mahone Bay (3)
- 1A2-C-H-PH :: Province House at Halifax (7)
- 1A2-C-H-SG :: Saint George's Round Church (8)
- 1A2-C-H-SP :: Saint Paul's Anglican Church (7)

Canada: New Brunswick:

- 1A2-C-MS-MS :: Marysville (6)

Canada: Ontario:

- 1A2-C-T-EC :: Eaton Centre (18)

Canada: Quebec:

- 1A2-C-M-CC :: Château Champlain (5)

England:

- 1A2-E-B-BO :: Bath (40)
- 1A2-E-L-TL :: Tower of London (1)

France:

- 1A2-F-AF :: Abbaye de Fontfroide (23)
- 1A2-F-AM-AMO :: Aigues-Mortes (13)
- 1A2-F-AM-AC-1 :: Amiens Cathedral: Exterior (22)
- 1A2-F-AM-AC-2 :: Amiens Cathedral: Interior (26)
- 1A2-F-VZ-VZC :: Basilique Ste-Madeleine (53)
- 1A2-F-BL :: Blois: Views of the Town (6)
- 1A2-F-C-CO :: Carcassonne (42)
- 1A2-F-C-C-1 :: Chartres Cathedral: West Front (24)
- 1A2-F-C-C-2 :: Chartres Cathedral: Side Elevations (33)
- 1A2-F-C-C-3 :: Chartres Cathedral: Interior (40)
- 1A2-F-C-C-4 :: Chartres Cathedral: Choir Screen (22)
- 1A2-F-C-C-5 :: Chartres Cathedral: Stained Glass (37)
- 1A2-F-AB-CA :: Château d'Amboise (40)
- 1A2-F-CH-2 :: Château de Chantilly: Gardens (29)
- 1A2-F-CCH-2 :: Château de Chenonceau: Gardens (25)
- 1A2-F-CVV-3 :: Château de Vaux le Vicomte: Gardens (49)
- 1A2-F-CV-2 :: Château de Villandry: Gardens (49)
- 1A2-F-G-FCP :: France: Creative Photoshop (20)
- 1A2-F-SM-JC :: Jacques Cartier's House (9)
- 1A2-F-MSM :: Mont-St-Michel (37)
- 1A2-F-VR-1 :: Versailles: Palace East Front (57)
- 1A2-F-VR-2 :: Versailles: Palace West Front (21)



1A2-F-MSM-B4 / defense walls



1A2-F-G-FCP-B5 / view from the causeway after a storm



1A2-F-G-FCP-B6

MONT-ST-MICHEL



1A2-F-MSM-B1 / general view



1A2-F-MSM-A1 / distant view from causeway



1A2-F-G-FCP-B8



1A2-F-MSM-E2 / cloister



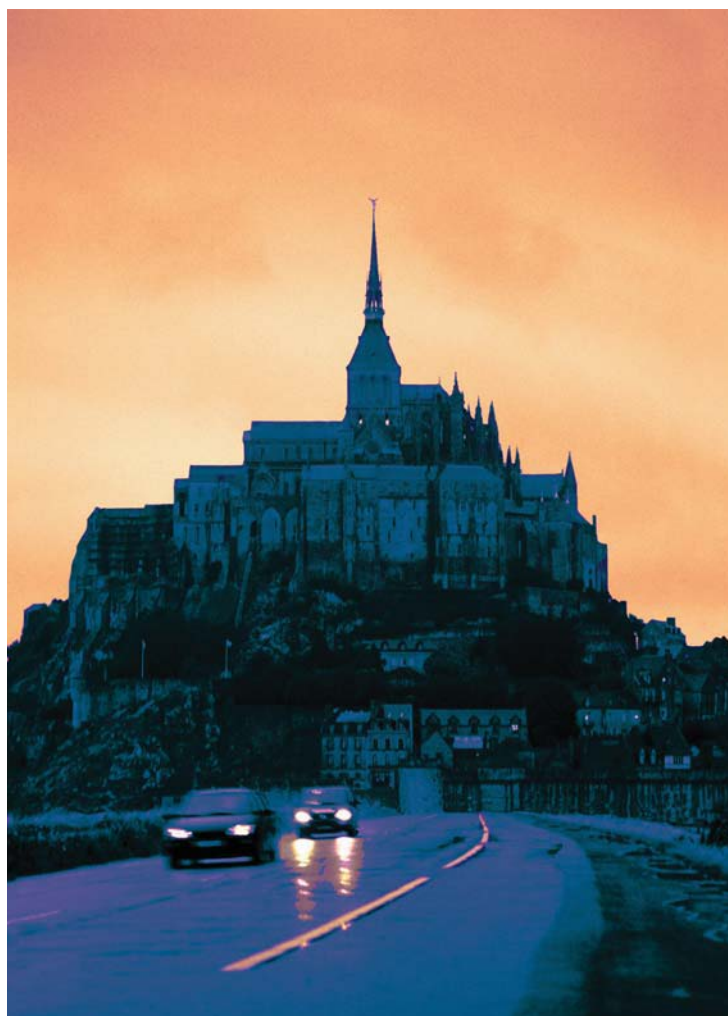
1A2-F-G-FCP-B9 / view in fog



1A2-F-MSM-G1 / vaults



1A2-F-MSM-G3 / vaults



1A2-F-G-FCP-B7 / view from the causeway at sunset



1A2-F-P-ND-2-B1



1A2-F-P-ND-4-F5



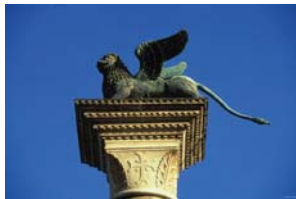
1A2-F-P-ND-1-M2



1A2-F-VR-2-A3 / Versailles: Palace West Front



1A2-I-VE-PM-C2 / Venice



1A2-I-VE-PM-D1 / Venice



1A2-I-F-BS-A3



1A2-I-F-C-A4



1A2-I-F-D-I1



1A2-I-F-D-B2 / Florence Cathedral

FRANCE, continued

- 1A2-F-VR-3 :: Versailles: Royal Chapel (13)
- 1A2-F-VR-4 :: Versailles: Stables (16)
- 1A2-F-VR-5 :: Versailles: Statue of Louis XIV (5)
- 1A2-F-VR-6 :: Versailles: Grand Trianon (26)
- 1A2-F-VR-7 :: Versailles: Petit Trianon (48)
- 1A2-F-VR-8 :: Versailles: Hamlet (40)
- 1A2-F-VR-9 :: Versailles: Formal Gardens (48)
- 1A2-F-VR-10 :: Versailles: Formal Garden - Other (9)
- 1A2-F-VR-11 :: Versailles: Parterre Gardens (38)
- 1A2-F-VR-12 :: Versailles: Grand Trianon Gardens (26)
- 1A2-F-VR-13 :: Versailles: Petit Trianon Gardens (11)
- 1A2-F-VR-14 :: Versailles: Temple of Love (6)

France: Paris:

- 1A2-F-P-CE :: Champs-Élysées (19)
- 1A2-F-P-FH :: Forum des Halles (12)
- 1A2-F-P-GN :: Gare du Nord (11)
- 1A2-F-P-I-2 :: Invalides: Église du Dome - Interior (50)
- 1A2-F-P-LD :: La Défense (11)
- 1A2-F-P-ND-1 :: Notre-Dame Cathedral: Exterior (83)
- 1A2-F-P-ND-2 :: Notre-Dame Cathedral: Interior (22)
- 1A2-F-P-ND-3 :: Notre-Dame Cathedral: Stained Glass (17)
- 1A2-F-P-ND-4 :: Notre-Dame Cathedral: Painted Murals (143)
- 1A2-F-P-PVC-1 :: Paris - Views: Aerial Views (44)
- 1A2-F-P-PVC-2 :: Paris - Views: Scenic City Views (60)
- 1A2-F-P-PC :: Paris: Creative Photoshop (11)
- 1A2-F-P-PS :: Paris: Seine Scenes (36)
- 1A2-F-P-PM :: Wall for Peace (7)

Italy:

- 1A2-I-AS-AV :: Assisi (4)
- 1A2-I-PV-CP :: Certosa di Pavia (10)
- 1A2-I-U-PD :: Ducal Palace: Urbino (42)
- 1A2-I-G-IC :: Italian Countryside (33)
- 1A2-I-G-ITH :: Italian Hill Towns (20)
- 1A2-I-S-PC :: Piazza del Campo (29)
- 1A2-I-VE-PM :: Piazzetta di San Marco (17)
- 1A2-I-U-UO :: Urbino (9)
- 1A2-I-VE-AV :: Venice: Aerial Views (17)

Italy: Florence:

- 1A2-I-F-AR :: Arno River (18)
- 1A2-I-F-B :: Bargello (24)
- 1A2-I-F-CG :: Certosa del Galluzzo (4)
- 1A2-I-F-BS :: Florence Baptistery (19)
- 1A2-I-F-C :: Florence Campanile (18)



1A2-F-P-PVC-2-A6



1A2-F-P-PC-A10 / Eiffel Tower at dusk with full moon



1A2-F-P-PVC-2-A2

PARIS



1A2-F-P-PC-A2 / Pont Alexandre-III, Paris



1A2-F-P-PVC-2-B1 / Place de la Concorde



1A2-F-P-PVC-2-A1



1A2-F-P-PVC-2-G4 / Paris Scenic



1A2-F-P-PVC-2-D2 / Paris Scenic



1A2-F-P-PVC-2-A5 / Eiffel Tower at dusk



1A2-F-P-PVC-2-A3



1A2-F-P-PS-A25



1A2-F-P-PC-A3

FLORENCE, *continued*



1A2-I-F-O-3-B1



1A2-I-F-O-1-A4



1A2-I-F-O-10-A3



1A2-I-F-O-7-B3 / N. of St Luke



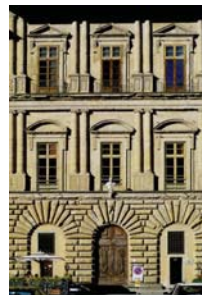
1A2-I-F-O-2-B1 / N. of Four Sts.



1A2-I-F-PS-A2



1A2-I-F-PST-A3



1A2-I-F-PU-A3



1A2-I-F-PV-AA3



1A2-I-F-SM-D2



1A2-I-F-SC-A5



1A2-I-PS-PDD-A2 / Piza: Piazza del Duomo

- 1A2-I-F-D :: Florence Cathedral (71)
- 1A2-I-F-FVC :: Florence: Views of the City (13)
- 1A2-I-F-FV :: Florence: Views of the Countryside (6)
- 1A2-I-F-LL :: Loggia dei Lanzi (11)
- 1A2-I-F-LM :: Loggia del Mercato Nuovo (6)
- 1A2-I-F-MD :: Monument to Dante Alighieri (10)
- 1A2-I-F-O-1 :: Orsanmichele: Niche of St. Thomas (20)
- 1A2-I-F-O-2 :: Orsanmichele: Niche of Four Saints (24)
- 1A2-I-F-O-3 :: Orsanmichele: Niche of Madonna & Child (7)
- 1A2-I-F-O-4 :: Orsanmichele: Niche of Saint Eloy (18)
- 1A2-I-F-O-5 :: Orsanmichele: Niche of Saint James (13)
- 1A2-I-F-O-6 :: Orsanmichele: Niche of Saint John Evangelist (6)
- 1A2-I-F-O-7 :: Orsanmichele: Niche of Saint Luke (18)
- 1A2-I-F-O-8 :: Orsanmichele: Niche of Saint Mark (19)
- 1A2-I-F-O-9 :: Orsanmichele: Niche of Saint Philip (18)
- 1A2-I-F-O-10 :: Orsanmichele: Niche of Saint Peter (12)
- 1A2-I-F-O :: Orsanmichele: Views & Other Parts (22)
- 1A2-I-F-PA :: Palazzo Antinori (10)
- 1A2-I-F-PB :: Palazzo Bartolini Salimbeni (9)
- 1A2-I-F-PS :: Palazzo Cocchi (7)
- 1A2-I-F-PP :: Palazzo Pitti (32)
- 1A2-I-F-PST :: Palazzo Strozzi (12)
- 1A2-I-F-PU :: Palazzo Uguccioni (10)
- 1A2-I-F-PV :: Palazzo Vecchio (34)
- 1A2-I-F-PE :: Pensilina (11)
- 1A2-I-F-PFF :: Piazza de Frescobaldi Fountain (7)
- 1A2-I-F-PDS :: Piazza della Signoria (29)
- 1A2-I-F-PG :: Piazza San Giovanni (4)
- 1A2-I-F-PSC :: Piazza Santa Croce (12)
- 1A2-I-F-PSA :: Piazza Santissima Annunziata (11)
- 1A2-I-F-PVE :: Ponte Vecchio (17)
- 1A2-I-F-PR :: Porta Romana (2)
- 1A2-I-F-SG :: San Giovanni Evangelista (5)
- 1A2-I-F-CS :: San Lorenzo: Cloister (5)
- 1A2-I-F-CP :: San Lorenzo: Chapel of the Princes (10)
- 1A2-I-F-SM :: San Miniato al Monte (28)
- 1A2-I-F-SS :: San Salvatore al Vescovo (2)
- 1A2-I-F-SC :: Santa Croce (22)
- 1A2-I-F-ST :: Santa Trinità (20)
- 1A2-I-F-SST :: Santo Stefano (5)

- Italy: Pisa:
- 1A2-I-PS-CS :: Campo Santo (19)
- 1A2-I-PS-PDD :: Pisa: Piazza del Duomo (10)
- 1A2-I-PS-PD :: Pisa: Cathedral (49)
- 1A2-I-PS-PC :: Pisa: Campanile (11)
- 1A2-I-PS-PB :: Pisa: Baptistery (13)
- 1A2-I-PS-SM :: Pisa: Santa Maria della Spina (26)

Italy: Rome:

- 1A2-I-R-PCF :: Campo de' Fiori (4)
- 1A2-I-R-SP-5 :: Chigi Chapel: Habakkuk and the Angel (35)
- 1A2-I-R-SP-6 :: Chigi Chapel: Daniel and the Lion (18)
- 1A2-I-R-FM :: Fontana della Piazza (6)
- 1A2-I-R-FA :: Fontana delle Anfore (1)
- 1A2-I-R-FS :: Fontanella dei Libri (4)
- 1A2-I-R-FF :: Fontanella del Facchino (2)
- 1A2-I-R-GMC :: Gesù e Maria al Corso (29)
- 1A2-I-R-G-2 :: Il Gesù: Cappella di Sant'Ignazio (39)
- 1A2-I-R-G-3 :: Il Gesù: Ceiling Frescos (12)
- 1A2-I-R-G-4 :: Il Gesù: Other Works (5)
- 1A2-I-R-LM :: La Maddalena (20)
- 1A2-I-R-OS :: Ospedale di Santo Spirito in Sassia (14)
- 1A2-I-R-PDP :: Palazzina di Pio IV (5)
- 1A2-I-R-PB :: Palazzo Barberini (23)
- 1A2-I-R-PBO :: Palazzo Borghese (10)
- 1A2-I-R-PQ :: Palazzo del Quirinale (5)
- 1A2-I-R-PC :: Palazzo della Cancelleria (41)
- 1A2-I-R-PV :: Palazzo di Venezia (12)
- 1A2-I-R-DP :: Palazzo Doria Pamphili (9)
- 1A2-I-R-PM :: Palazzo Margherita (2)
- 1A2-I-R-PS :: Palazzo Spada (39)
- 1A2-I-R-PT :: Palazzo Torlonia (10)
- 1A2-I-R-PPO :: Piazza del Popolo (29)
- 1A2-I-R-PR :: Piazza della Rotonda (5)
- 1A2-I-R-PN :: Piazza Navona (5)
- 1A2-I-R-SGL :: Saint John Lateran: Overview (102)
- 1A2-I-R-SPI :: Saint Peter's: Overview (22)
- 1A2-I-R-SGO :: San Giovanni in Oleo (5)
- 1A2-I-R-SGI :: San Girolamo degli Illirici (7)
- 1A2-I-R-SCF :: Santa Caterina dei Funari (6)
- 1A2-I-R-CN :: Santa Maria in Valicella (Chiesa Nuova) (34)
- 1A2-I-R-CS :: Spada Chapel in San Girolama (20)
- 1A2-I-R-VGI :: Villa Giulia (66)



1A2-I-PS-PC-A4



1A2-I-PS-CS-B2



1A2-I-PS-PD-C1



1A2-I-F-PFF-A6



1A2-I-F-SC-C9



1A2-I-F-SC-C6



1A2-I-R-PS-A7 / Palazzo Spada



1A2-I-R-PS-E2 / Palazzo Spada



1A2-I-R-PQ-A2



1A2-I-R-PBO-AA1



1A2-I-R-PC-D3

Mexico:

- 1A2-M-MC-CP :: Chapultepec Park (7)

Turkey:

- 1A2-T-IS-IO :: Istanbul: Overview (30)
- 1A2-T-IS-IP :: Istanbul: People (9)
- 1A2-T-TO :: Troy (7)

United States: Arizona:

- 1A2-US-PH-BL :: Burton Barr Central Library (14)
- 1A2-US-PH-PH :: Phoenix (12)
- 1A2-US-AZ-HC :: Chapel of the Holy Cross (8)
- 1A2-US-NP-GC :: Grand Canyon National Park (25)



1A2-I-R-CS-A1



1A2-I-R-VGI-G6



1A2-I-R-SGL-D3



1A2-US-PH-PH-A9 / Phoenix



1A2-US-PH-PH-A10 / Phoenix



1A2-US-CH-AVH-A2 / Chicago: Views from John Hancock



1A2-US-NO-SH-C3 / Shotgun Houses (New Orleans)



1A2-US-NO-SLC-A1 / St. Louis C.



1A2-US-NO-MA-B3 / Market Area



1A2-US-BT-BHA-A3



1A2-US-BT-BHA-B4

United States: California:

- 1A2-US-SF-AI :: Alcatraz Island (12)
- 1A2-US-SF-CT :: Coit Tower and Telegraph Hill (9)
- 1A2-US-SF-GG :: Golden Gate Bridge (40)
- 1A2-US-SF-GC :: Grace Cathedral (10)
- 1A2-US-LA-LMA :: LA County Art Museum (4)
- 1A2-US-SF-SV :: San Francisco: Skyline Views (21)
- 1A2-US-SF-SS :: Streets of San Francisco (13)
- 1A2-US-SF-TP :: Transamerica Pyramid (13)
- 1A2-US-SF-TC :: Trolley Cars (5)
- 1A2-US-SF-VH :: Victorian Houses of San Francisco (38)
- 1A2-US-LA-VP :: Villa dei Papiri (48)
- 1A2-US-SF-YB :: Yerba Buena Center for the Arts (8)

United States: Illinois:

- 1A2-US-CH-AVH :: Chicago: Views from John Hancock (11)
- 1A2-US-CH-AVS :: Chicago: Views from Sears Tower (12)
- 1A2-US-CH-CR :: Chicago: Chicago River (15)
- 1A2-US-CH-MA :: Chicago: Michigan Avenue (5)
- 1A2-US-CH-SS :: Chicago: Skyline Views (23)

United States: Louisiana: New Orleans:

- 1A2-US-NO-GH :: Gallier Hall (5)
- 1A2-US-NO-MA :: Market Area (8)
- 1A2-US-NO-TW :: Metairie Cemetery;
Greek Revival Mausoleum (7)
- 1A2-US-NO-NOM :: New Orleans Museum of Art (1)
- 1A2-US-NO-SLC :: Saint Louis Cathedral (19)
- 1A2-US-NO-SH :: Shotgun Houses (29)

United States: Maryland:

- 1A2-US-BT-AC :: American Can Company (7)
- 1A2-US-AN-AO :: Annapolis: Overview (14)
- 1A2-US-BT-CH :: Baltimore City Hall (3)
- 1A2-US-BT-BHA :: Baltimore Harbor (36)
- 1A2-US-BT-BH :: Bolton Hill (12)
- 1A2-US-BT-CS :: Camden Station (6)
- 1A2-US-BT-CY :: Camden Yards Oriole Park (5)
- 1A2-US-BT-DH :: Druid Hill Park Conservatory (2)
- 1A2-US-BT-ET :: Emerson Tower (1)
- 1A2-US-BT-HM :: Holocaust Memorial (Baltimore) (16)
- 1A2-US-AN-SH :: Maryland State House (11)
- 1A2-US-BT-PS :: Penn Station (3)

United States: Massachusetts:

- 1A2-US-B-BC :: Boston Common (8)
- 1A2-US-ST-O :: Old Sturbridge Village (78)
- 1A2-US-PL-PP :: Plimoth Plantation (7)

United States: New York:

- 1A2-US-BF-CH :: Buffalo City Hall (6)
- 1A2-US-BF-ES :: Ellicott Square (32)
- 1A2-US-NY-KO :: John F. Kennedy International Airport:
New Terminal One (25)
- 1A2-US-NY-LC :: Lincoln Center (15)
- 1A2-US-NY-NYC :: New York: Creative Photoshop (12)
- 1A2-US-NY-FD :: New York: Financial District (57)
- 1A2-US-NY-MT :: New York: Mid-Town Manhattan (57)
- 1A2-US-BF-OPO :: Old Post Office (17)
- 1A2-US-NY-TT :: Trump Tower (2)
- 1A2-US-NY-UN :: United Nations Headquarters (36)



1A2-US-BF-CH-A5



1A2-US-BF-ES-E5



1A2-US-NY-MT-A27

United States: Pennsylvania:

- 1A2-US-PA-IH :: Independence Hall (13)
- 1A2-US-HB-PSC :: Pennsylvania State Capitol Building (23)
- 1A2-US-PA-MA :: Philadelphia Museum of Art (9)
- 1A2-US-PA-SE :: Philadelphia: South End (10)
- 1A2-US-PB-PBO :: Pittsburgh: Skyscrapers and Overview (14)
- 1A2-US-PA-PS :: PSFS Building (17)



1A2-US-PA-SE-A3



1A2-US-NY-KO-D11



1A2-US-NY-TT-A1

United States: Virginia:

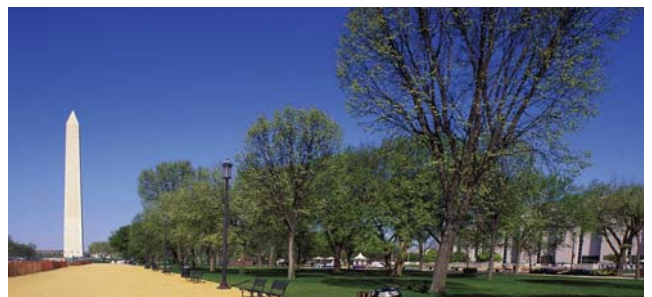
- 1A2-US-DC-AC :: Arlington National Cemetery (31)
- 1A2-US-MV-MV :: Mount Vernon (48)

United States: Washington DC:

- 1A2-US-DC-CB :: Capitol Building (42)
- 1A2-US-DC-GO :: Georgetown: Overview (7)
- 1A2-US-DC-HM :: Holocaust Memorial Museum (12)
- 1A2-US-DC-JM :: Jefferson Memorial (15)
- 1A2-US-DC-KW :: Korean War Veterans Memorial (22)
- 1A2-US-DC-LC :: Library of Congress (11)
- 1A2-US-DC-LM :: Lincoln Memorial (29)
- 1A2-US-DC-PA :: Pennsylvania Avenue (3)
- 1A2-US-DC-SIB :: Smithsonian Institution Buildings (28)
- 1A2-US-DC-SC :: Supreme Court Building (23)
- 1A2-US-DC-TM :: The Mall (37)
- 1A2-US-DC-VM :: Vietnam Memorial (27)
- 1A2-US-DC-WM :: Washington Monument (14)
- 1A2-US-DC-WH :: White House (11)



1A2-US-PB-PBO-A1 / Pittsburgh Skyscrapers



1A2-US-DC-TM-B5 / The Mall, Washington DC



1A2-US-DC-CB-C8



1A2-US-NY-MT-A8



1A3-CA-CW-8-A10 / Colonial W.



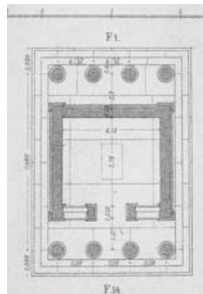
1A3-CA-CW-10-C4 / Colonial W.



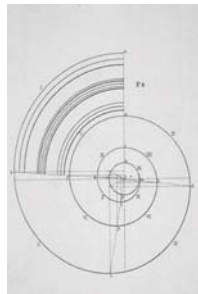
1A3-G-A-1-A2 / Athens Acropolis: Views & Walls



1A3-G-AD-E-E13



1A3-G-AD-C-C2



1A3-G-AD-E-E26



1A3-G-D-3-A2 / Delphi: Sacred Way



1A3-G-D-11-B1 / Delphi: Sanctuary of Athena Pronaia

Architecture & Art by Period

- 1A3-CA-CW :: American Colonial Architecture: Colonial Williamsburg (150)

- 1A3-G-A-1 :: Ancient Greek Architecture & Art: Athens Acropolis: Views & Walls (15)
- 1A3-G-A-2 :: Athens Acropolis: Beulé Gate, Nike & Propylaeum (47)
- 1A3-G-A-3 :: Athens Acropolis: Parthenon (71)
- 1A3-G-A-4 :: Athens Acropolis: Erechtheion (60)
- 1A3-G-A-6 :: Athens Acropolis: Theater of Dionysos (34)
- 1A3-G-A-7 :: Athens Acropolis: Acropolis Museum (5)
- 1A3-G-AD(1) :: Athens Acropolis: Drawings (104)
- 1A3-G-AG :: Athens Agora (87)
- 1A3-G-D-1 :: Delphi: Views of the Site (9)
- 1A3-G-D-2 :: Delphi: Sacred Way (54)
- 1A3-G-D-3 :: Delphi: Treasury of the Athenians (27)
- 1A3-G-D-4 :: Delphi: Stoa of the Athenians (22)
- 1A3-G-D-5 :: Delphi: Temple of Apollo (34)
- 1A3-G-D-6 :: Delphi: Offerings Around Temple of Apollo (25)
- 1A3-G-D-7 :: Delphi: Seating and Middle Area (8)
- 1A3-G-D-8 :: Delphi: Theater (16)
- 1A3-G-D-9 :: Delphi: Stadium (15)
- 1A3-G-D-10 :: Delphi: Roman Agora (5)
- 1A3-G-D-11 :: Delphi: Sanctuary of Athena Pronaia (39)
- 1A3-G-E-1 :: Epidaurus: Theater (31)
- 1A3-G-AD(2) :: Greek Drawings (69)
- 1A3-G-M :: Miletus (71)
- 1A3-G-O-1 :: Olympia: Stadium (41)
- 1A3-G-O-2 :: Olympia: Temple of Zeus & Surrounding Area (39)
- 1A3-G-O-3 :: Olympia: Temple of Hera & Metroon (22)
- 1A3-G-O-4 :: Olympia: Terrace of the Treasuries (15)
- 1A3-G-O-5 :: Olympia: Exedra of Herod Atticus (7)
- 1A3-G-O-6 :: Olympia: Philippeion (9)
- 1A3-G-O-7 :: Olympia: East & South Stoas (17)
- 1A3-G-O-8 :: Olympia: Bouleuterion (7)
- 1A3-G-O-9 :: Olympia: Gymnasium (8)
- 1A3-G-O-10 :: Olympia: Palaestra (9)
- 1A3-G-O-11 :: Olympia: Leonidaion (20)
- 1A3-G-O-12 :: Olympia: Phidias' Studio (9)
- 1A3-G-O-13 :: Olympia: Museum Highlights (26)
- 1A3-G-P-P :: Paestum (74)
- 1A3-G-PR :: Priene (69)

- 1A3-MI-K :: Ancient Minoan Architecture: Knossos (89)

Ancient Roman Architecture & Art:

- 1A3-R-R-AP-1 :: Ara Pacis: Views & Architectural Details (12)
- 1A3-R-R-AP-2 :: Ara Pacis: Reliefs Front & Back (19)
- 1A3-R-R-AP-3 :: Ara Pacis: South Procession (49)
- 1A3-R-R-AP-4 :: Ara Pacis: North Procession (35)
- 1A3-R-R-AP-5 :: Ara Pacis: Acanthus Leaf Frieze (27)
- 1A3-R-R-AP-6 :: Ara Pacis: Altar & Inner Wall (20)
- 1A3-R-R-AC-1 :: Arch of Constantine: General Views (17)
- 1A3-R-R-AC-2 :: Arch of Constantine: Constantinian R. (43)
- 1A3-R-R-AT :: Arch of Titus (61)
- 1A3-R-G-RA :: Athens: Roman Agora (15)
- 1A3-R-R-BC :: Baths of Caracalla (44)
- 1A3-R-R-CMM :: Circus Maximus (6)
- 1A3-R-R-CMA :: Column of Marcus Aurelius (17)
- 1A3-R-R-CT-1 :: Column of Trajan: Views & Base (39)
- 1A3-R-R-CT-2 :: Column of Trajan: First Forty Scenes (40)
- 1A3-R-R-CT-3 :: Column of Trajan: Next Forty Scenes (40)
- 1A3-R-R-CT-4 :: Column of Trajan: More Scenes (40)
- 1A3-R-R-CT-5 :: Column of Trajan: Last Scenes (28)
- 1A3-R-R-FA :: Forum of Augustus (8)
- 1A3-R-R-FR :: Forum Romanum (51)
- 1A3-RG-HA :: Hadrian's Arch (8)
- 1A3-R-G-HL :: Hadrian's Library (12)
- 1A3-R-T-VA :: Hadrian's Villa (86)
- 1A3-R-R-NM :: Nile Mosaic (4)
- 1A3-R-O-OA :: Ostia Antica (266)
- 1A3-R-R-PA :: Pantheon (52)
- 1A3-R-T-P-1 :: Pergamon: Acropolis (107)
- 1A3-R-T-P-2 :: Pergamon: Asklepieion (64)
- 1A3-R-P-P :: Pompeii (124)
- 1A3-R-F-PG :: Pont-du-Gard (17)
- 1A3-R-R-C :: Roman Colosseum: Overview (39)
- 1A3-R-AD-H :: Roman Colosseum: Drawings (16)

Ancient Roman Sculpture:

- 1A3-RS-R-CHA :: Colossal Head of Augustus (2)
- 1A3-RS-R-MA :: Equestrian Statue of Marcus Aurelius (19)
- 1A3-RS-R-R :: Roma (4)

Art Deco Architecture:

- 1B3-AD-MB :: Miami Beach Art Deco (96)

Cajun Architecture:

- 1A3-C-CO :: Cajun Architecture (13)

Early Christian Architecture:

- 1A3-EA-PA :: Perugia Archway (6)
- 1A3-EA-TA :: Temple of Aletrium (10)



1A3-R-R-PA-J7 / Pantheon



1A3-RS-R-MA-B2 / Marcus Aurelius



1B3-AD-MB-N5



1A3-C-CO-A5



1A3-EA-TA-B3



1A3-M-M-CI-A4 / Chichen Itza: El Castillo or Kukulcan's Pyramid



1A3-M-M-TU-B1 / Tulum



1A3-M-M-TU-E1 / Tulum



1A4-AE-A-A20



1A4-AE-G-G59



1A4-AE-F-F8



1A4-AE-B-B49 / Arches set



1A4-AE-E-E3 / Keystones set



2A1-LNA-JT-F3 / Jardin des Tuileries, by Le Nôtre

Mesoamerican Architecture:

- 1A3-M-M-CI :: Chichen Itza (110)
- 1A3-M-M-T-1 :: Teotihuacan: Pyramid of the Sun (16)
- 1A3-M-M-T-2 :: Teotihuacan: Pyramid of the Moon (14)
- 1A3-M-M-T-3 :: Teotihuacan: Avenue of the Dead (20)
- 1A3-M-M-T-4 :: Teotihuacan: Plaza of the Moon (17)
- 1A3-M-M-T-5 :: Teotihuacan: Plaza of Quetzalpapalotl (13)
- 1A3-M-M-T-6 :: Teotihuacan: Citadel (13)
- 1A3-M-M-TU :: Tulum: Mayan Ruins (28)

Prehistoric Architecture:

- 1A3-P-E-ST :: Stonehenge (1)

Spanish Colonial Architecture:

- 1A3-CM-MSA :: Mission San C. Borromeo (37)

Architecture by Topic

Architectural Elements:

- 1A4-AE-A :: Columns & Capitals (74)
- 1A4-AE-B :: Arches (53)
- 1A4-AE-C :: Pediments & Gables (34)
- 1A4-AE-D :: Entablatures (22)
- 1A4-AE-E :: Keystones (32)
- 1A4-AE-F :: Brackets (26)
- 1A4-AE-G :: Decorative Elements (95)
- 1A4-AE-H :: Domes (43)

Doors:

- 1A4-D-1 :: Various Doors (60)
- 1A4-D-2 :: Frames & Parts (50)
- 1A4-D-3 :: Details (42)
- 1A4-D-4 :: Knockers & Knobs (40)

Landscape Architecture by Architect

Burnham, Daniel Hudson:

- 2A1-BD-GP :: Grant Park (20)

Charney, Melvin:

- 2A1-CM-JM :: CCA Sculpture Garden (31)

Le Nôtre, André:

- 2A1-LNA-JT :: Jardin des Tuileries (67)

Meacham, George V.:

- 2A1-MG-PG :: Boston Public Garden (15)

Olmsted, Frederick Law:

- 2A1-OF-CHL :: Capitol Hill Landscape (39)
- 2A1-OF-CP :: Central Park (130)

OLMSTED, continued

- 2A1-OF-PP-1 :: Prospect Park: Grand Army Plaza (48)
- 2A1-OF-PP-2 :: Prospect Park: The Park (62)

- Schwartz, Martha:
- 2A1-SS-CP :: Cumberland Park (18)

- Tschumi, Bernard:
- 2A1-TB-PV :: Parc de la Villette (16)

- Saint-Phalle, Niki de
- 2A1-TN-FD :: Fontaines Décorées (5)

- Zion & Breen:
- 2A1-ZB-PP :: Paley Park (6)



1A2-US-NP-GC-A4



2A2-US-NP-AP-B5



2A2-US-NP-AP-A13



2A2-US-NP-DV-D12 / Death V.



2A2-US-NP-DV-D7 / Death V.

Landscape Architecture by Country

- China:
- 2A2-CH-SU-CGD :: Chinese Garden Drawings (13)

- England:
- 2A2-E-L-GP :: Green Park (5)

- France:
- 2A2-F-P-JA :: Jardin Atlantique (12)
- 2A2-F-P-JL :: Luxembourg Garden: Overview (50)
- 2A2-F-P-JLM :: Luxembourg Garden: Medici Fountain (19)
- 2A2-F-P-JR :: Jardin du Ranelagh (2)
- 2A2-F-P-PBC :: Parc des Buttes-Chaumont (22)

- Italy:
- 2A2-I-BA-VL :: Villa Lante (65)
- 2A2-I-F-GB :: Boboli Gardens (62)
- 2A2-I-FR-VA :: Villa Aldobrandini (61)
- 2A2-I-F-VG :: Villa Gamberaia (85)
- 2A2-I-R-GV :: Vatican Gardens (32)

- United States:
- 2A2-US-CH-BF :: Buckingham Memorial Fountain (10)
- 2A2-US-NY-BP :: Bryant Park (8)
- 2A2-US-MB-MBP :: Miami Beach Park (12)
- 2A2-US-DC-PP :: Pershing Park (5)

- United States: Natural Landscapes
- 2A2-US-NP-AP :: Arches National Park (41)
- 2A2-US-NP-BC :: Bryce Canyon (12)
- 2A2-US-CA-CC :: California Coast (14)
- 2A2-US-NP-DV :: Death Valley (44)
- 2A2-US-NP-DVC :: Death Valley: Creative Photoshop (40)
- 2A2-US-AZ-MV :: Monument Valley (8)
- 2A2-US-NP-ZP :: Zion National Park (8)



2A2-US-NP-DV-B1 / Death Valley



2A2-US-NP-DVC-A1 / Death Valley: Creative Photoshop



2A2-US-NP-ZP-B1



2A2-US-AZ-MV-A6



2A2-US-NP-AP-D1



6A1-PAN-BS-D4



6A1-GB-RS-C2



6A1-GB-HN-A3



6A1-GL-BE-A1



6A1-GB-EMC-A3



6A1-LF-CC-B4



6A1-GB-O-A5 / Obelisk



6A1-GL-BN-A4 / North Doors



6A1-LF-CC-B11 / Carafa Chapel, Rome, by F. Lippi

Art in Public by Artist

Andrea Pisano:

- 6A1-PAN-BS :: Florence Baptistery: South Doors (28)
- 6A1-PAN-CB :: Florence Campanile: Pisano Reliefs (35)

Bandinelli, Baccio:

- 6A1-BB-HC :: Hercules & Cacus (16)

Benedetto da Maiano:

- 6A1-MB-MP :: Santa Croce: Marble Pulpit (9)

Calder, Alexander:

- 6A1-CA-F :: Flamingo (5)
- 6A1-CA-FD :: Flying Dragon (3)

Danti, Vincenzo:

- 6A1-DE-BJ :: Beheading of Saint John the Baptist (13)

Donatello:

- 6A1-DB-A :: Annunciation (sculpture) (18)
- 6A1-DB-JH :: Judith and Holofernes (17)
- 6A1-DB-M :: Marzocco (2)

Fedi, Pio:

- 6A1-FP-RP :: Rape of Polyxena (8)

Ghiberti, Lorenzo:

- 6A1-GL-BE :: Florence Baptistery: East Doors (41)
- 6A1-GL-BN :: Florence Baptistery: North Doors (6)

Giambologna:

- 6A1-GB-EMC :: Equestrian Monument to Cosimo I (31)
- 6A1-GB-EMF :: Equestrian Monument to F. I de'Medici (8)
- 6A1-GB-HN :: Hercules & Nessus (4)
- 6A1-GB-O :: Obelisk (5)
- 6A1-GB-PSD :: Pisa: Cathedral Doors (18)
- 6A1-GB-RS :: Rape of the Sabines (19)

Lippi, Filippino:

- 6A1-LF-CC :: Carafa Chapel (48)

Miró, Joan:

- 6A1-MJ-C :: Chicago (6)

Moore, Henry:

- 6A1-MH-LI :: Large interior Form (3)
- 6A1-MH-LIE :: Large Upright Interior External Form (3)



6A1-AA-A-A1 / Annunciation, in S. M. sopra Minerva, by A. Romano

6A1-AA-A
:: Romano, Antoniazzo:
:: Annunciation (painting) (2)

6A1-RA-ML
:: Rossellino, Antonio:
:: Madonna del Latte (5)

6A1-RB-TLB
:: Rossellino, Bernardo:
:: Tomb of Leonardo Bruni (5)

6A1-SJ-P
:: Silva, Julio:
:: Pygmalion (9)

6A1-SD-CV
:: Smith, David:
:: Cubi VII (3)

6A1-TL-FG
:: Taft, Lorado:
:: Foundation of the Great Lakes (3)

Decorative Arts by Artist

7B1-CS-SC
:: Cooper, Susie:
:: Susie Cooper Earthenware Ceramics (24)



6A1-RA-ML-A2



6A1-RB-TLB-A1



6A1-SJ-P-A6



7B1-CS-SC-B1 / Susie Cooper Earthenware Ceramics

**END BASE COLLECTION
OF 16,000 IMAGES**



7B1-CS-SC-B9 / Susie Cooper Earthenware Ceramics