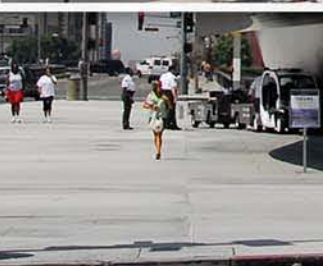


THE ARCHIVISION

# ADDITION MODULE FOUR

6,000 IMAGES



DISNEY CONCERT HALL • BY F. GEHRY



an image source for visual resource  
professionals

Renseignements généraux en français  
disponibles sur demande.

No part of this publication may be reproduced or printed,  
in whole or in part, without the  
written consent of Archivision.

All terms and fees subject to change without notice.

Archivision Inc.  
© 2009 Archivision Inc. All rights reserved.

version April 2009

# THE ARCHIVISION DIGITAL RESEARCH LIBRARY

This catalogue is a partially illustrated content list of architectural sites, gardens, parks and works of art which comprise the Archivision Digital Research Library. The Archivision Library is currently 46,000 18 MB files and is composed of:

- 1) Base Collection (16,000 images)
- 2) Addition Module One (6,000 images)
- 3) Addition Module Two (6,000 images)
- 4) Addition Module Three (6,000 images)
- 4) Addition Module Four (6,000 images)
- 4) Addition Module Five (6,000 images)

The content coverage within each Library module is:

- ∴ 60% architecture (most periods)
- ∴ 20% gardens & landscapes
- ∴ 15% public art
- ∴ 5% other design related topics

The Archivision Library makes an ideal complement to any core art digital collection, such as the Saskia Archive or ARTstor. Only the Archivision Digital Research Library meets the needs of students and faculty – for both research and teaching – in the disciplines of architecture, landscape architecture, and urban planning. We do not offer a subscription service – you must sign a site license agreement and pay a one-time license fee for the Library – then you may keep the images and related metadata in perpetuity with no additional annual fees. The exception is where you choose one of our hosted server options – the annual fee you pay is only for the access service.



## HOW TO ORDER

---

### SINGLE IMAGES:

The license of small groups of single images is available through our agent Scholars Resource. To search our image sets on the Scholars Resource website, you may use our set codes (or set titles) in the Quick Search field. All of the Archivision holdings may be seen in the Advanced Search – by Vendor – at:

**[www.scholarsresource.com](http://www.scholarsresource.com)**

### ARCHIVISION LIBRARY:

To license the Base Collection or Addition Modules please contact our sales representative, **Susan Jane Williams**. She will be happy to provide you with a quote based on your situation and needs.

**Susan Jane Williams**, Archivision Sales Rep. and Data Specialist

email: **[susan@archivision.com](mailto:susan@archivision.com)**  
toll free: 1-866-712-4627  
fax: 514-332-1445

## RECENT, PROFESSIONAL PHOTOGRAPHY THAT YOU LICENSE AND KEEP IN PERPETUITY. DISCOVER THE DIFFERENCE.

You may now tour the Archivision Library – 46,000 images with complete metadata – online via our new MDID or Luna Demos.

Please visit us online and take your tour today!

[www.archivision.com](http://www.archivision.com)

The **Archivision Digital Research Library** is a unique and fast growing collection of high quality images – photographed by a professional photographer, architect and past VR curator.

Each site documentation is extensive – intending to provide for in-depth visual research and analysis by students of architecture, landscape architecture, urban planning, archaeology, art and art history.

### ► ABOUT THE ARCHIVISION LIBRARY

#### 46,000 IMAGES

---

A core architecture collection covering important Egyptian, Greek, Roman, Medieval, Renaissance, Baroque, 18th and 19th Century, Islamic and Modern sites, gardens, parks and works of public art selected from our growing archive of more than 120,000 images. The Library can only be licensed in modules, starting with the Base Collection of 16,000 images. The Library expands each year via Addition Modules of 6,000 images each. The Addition Modules are licensed in sequence only, as they complement the growth and balance of the Library as a whole.

#### DELIVERY SYSTEMS AND COLLECTION MANAGEMENT OPTIONS

---

The Archivision Library has options for every stage of digital collection development – and every budget. For those institutions that have already chosen cataloging and delivery systems software, the Archivision Library is easy to load with ample format and derivative image choices and rich metadata that is mappable to any standard. The Archivision Library has been successfully used in all the major delivery systems.

For those institutions that are still investigating digital collection software, the Archivision Library presents a unique and no-fail base from which to test one or even several solutions economically.

## THE ARCHIVISION DIGITAL RESEARCH LIBRARY

(licensed by Library modules)

### ONE-TIME LICENSE FEES PER INSTITUTION

.: all fees are one-time, in perpetuity, in US\$ and subject to change :.  
(you may split payment over two fiscal years)

Images per Library module >>		16,000 images	+6,000 images	22,000 images	28,000 images
# OF STUDENTS UP TO:		BASE COLLECTION FEE	EACH ADDITION MODULE FEE	FEE WITH ADDITION MODULE ONE	FEE WITH ADDITION MODULE TWO
1	250	\$6,800	\$3,000	\$9,800	\$12,800
2	500	\$7,000	\$3,250	\$10,250	\$13,500
3	2,000	\$8,000	\$3,500	\$11,500	\$15,000
4	5,000	\$9,000	\$3,775	\$12,775	\$16,550
5	7,500	\$12,000	\$4,500	\$16,500	\$21,000
6	10,000	\$15,000	\$5,625	\$20,625	\$26,250
7	20,000	\$24,000	\$9,000	\$33,000	\$42,000
8	30,000	\$36,000	\$13,500	\$49,500	\$63,000
9	50,000	\$44,000	\$16,500	\$60,500	\$77,000
10	75,000	\$48,000	\$18,000	\$66,000	\$84,000
11	100,000 †	\$55,000	\$20,625	\$76,625	\$96,250

### OPTIONAL ANNUAL HOSTED SERVER ACCESS FEES

.: all fees are annual, for service only, in US\$ and subject to change :.  
(no software license needed for these services)

#### Choose access from a remote server via ALMAGEST or LUNA\*

.: set-up fee \$350 per institution :.

Images per Library module >>		16,000 images	+6,000 images	22,000 images	28,000 images
# OF STUDENTS UP TO:		BASE COLLECTION FEE	EACH ADDITION MODULE FEE	FEE WITH ADDITION MODULE ONE	FEE WITH ADDITION MODULE TWO
1	250	\$525	\$55	\$580	\$635
2	500	\$750	\$65	\$815	\$880
3	2,000	\$850	\$75	\$925	\$1,000
4	5,000	\$900	\$85	\$985	\$1,070
5	7,500	\$1,000	\$105	\$1,105	\$1,210
6	10,000	\$1,200	\$135	\$1,335	\$1,470
7	20,000	\$1,400	\$165	\$1,565	\$1,730
8	30,000	\$1,800	\$195	\$1,995	\$2,190
9	50,000	\$2,300	\$245	\$2,545	\$2,790
10	75,000	\$3,500	\$300	\$3,800	\$4,100
11	100,000 †	\$3,750	\$350	\$4,100	\$4,450

\* THIS IS NOT A SUBSCRIPTION SERVICE: With a signed site license and paid invoice for the Archivision Library fee, you will have the option to either 1) host the Library on your own server or 2) gain immediate access to it via the internet for your entire student population through payment of our annual Hosted Server Access Fees – and then DO NOTHING ON YOUR END. Perfect for those who do not yet have a delivery system in place at their institution. Take the Library back and host it on your server at any time. † Over 100,000 students, please ask for quote.

For complete information about the Archivision Library, access options,  
end user site license, and optional hosted server services, please visit us at:

[www.archivision.com](http://www.archivision.com)

## IMAGE SPECS AND UPGRADE FEES

### CHART A

:: Archivision ready-made image specs with size totals for server/space considerations ::

<b>BASE COLLECTION (16,000 IMAGES)</b>	<b>PER ADDITION MODULE (6,000 IMAGES)</b>
TIFFs: . . . . . 285 GB	TIFFs: . . . . . 110 GB
FULL (3100) JPEG: . . . . . 46 GB	FULL (3100) JPEG: . . . . . 17 GB
MEDIUM (1500) JPEG: . . . . . 10.5 GB	MEDIUM (1500) JPEG: . . . . . 4 GB
MEDIUM (1200) JPEG: . . . . . 7 GB	MEDIUM (1200) JPEG: . . . . . 3 GB
MEDIUM (1024) JPEG: . . . . . 5 GB	MEDIUM (1024) JPEG: . . . . . 2 GB
MEDIUM (800) JPEG: . . . . . 3.5 GB	MEDIUM (800) JPEG: . . . . . 1.5 GB
THUMB (96) JPEG: . . . . . 45 MB	THUMB (96) JPEG: . . . . . 16 MB
Zoomify JPEG (3100): . . . . . 35 GB	Zoomify JPEG (3100): . . . . . 12 GB
JPEG 2000 (3100): . . . . . 35 GB	JPEG 2000 (3100): . . . . . 13 GB

### CHART B

:: Archivision image types available and upgrade fees PER MODULE licensed ::

<b>BASE COLLECTION (16,000 IMAGES)</b>	<b>PER ADDITION MODULE (6,000 IMAGES)</b>
JPEG (any size on file) . . . . . Included in fee	JPEG (any size on file) . . . . . Included in fee
CUSTOM SIZE JPEGs . . . . . \$375	CUSTOM SIZE JPEGs. . . . . \$250
TIFFs (large only) . . . . . \$475	TIFFs (large only) . . . . . \$325
JPEG 2000 (large only). . . . . \$300	JPEG 2000 (large only) . . . . . \$250
Zoomify (large only) . . . . . \$400	Zoomify (large only) . . . . . \$300

### CHART C

:: Archivision catalog records and pre-built collection fees PER MODULE licensed ::

<b>BASE COLLECTION (16,000 IMAGES)</b>	<b>PER ADDITION MODULE (6,000 IMAGES)</b>
Catalog records from VireoCat database* . . . . . Included in fee	Catalog records from VireoCat database* . . . . . Included in fee
MDID pre-built collection . . . . . \$200	MDID pre-built collection . . . . . \$100
Almagest pre-built collection . . . . . \$200	Almagest pre-built collection . . . . . \$100
EmbARK pre-built collection* . . . . . \$300	EmbARK pre-built collection* . . . . . \$150
Luna collection build** . . . . . \$3,000	Luna collection build** . . . . . \$1,500

Note: MDID/Almagest pre-built collections include a template chart, choice lists, and metadata in csv files with step by step load instructions. EmbARK load files are EmbARK or ASCII.

#### Other fees:

Keep hard drive option: \$250 per drive shipped • Shipping: flat rate of \$75 per order

\* You have the option to take the database loaded with our records & choice lists and catalog your new content with it at no additional fee. VireoCat is a free cataloging utility written in FileMaker Pro; license & support fees apply to EmbARK Cataloguer and Web Kiosk.

\*\* Includes migration of Luna JPEG 2000 images & metadata to your server and a Luna collection build using the Archivision template. Please contract with Luna Imaging for this service and support at sales@luna-img.com.

# METADATA AND PHOTOGRAPHIC DOCUMENTATION

*Santa Maria dell'Assunzione – Ariccia, ITALY – by Bernini*

## WORK [RECORD]

source: Archivision, Inc.

## AGENT

display: Gian Lorenzo Bernini (Italian architect, 1598-1680)  
index:  
agent:  
name: Bernini, Gian Lorenzo  
type: personal  
vocab: ULAN  
refid: 500032022  
culture: Italian  
agent date type: life  
earliest date: 1598  
latest date: 1680

## DATE

display: 1662-1664  
index:  
type: creation  
earliest date: 1662  
latest date: 1664

## DESCRIPTION

display: Scheme based on a circular plan and having a hemispherical dome rising straight from the cornice of the main walls. It is entered through a triple-arched and pedimented portico with pilasters. This remarkably pure combination of cylinder, hemisphere and portico was clearly inspired by Bernini's contemporary involvement with schemes to restore the Pantheon to its 'original' state. Patron: Pope Alexander VII (Chigi)  
source: Grove Dictionary of Art Online. [www.groveart.com](http://www.groveart.com) (accessed 6 September 2007)

## LOCATION

display: Ariccia (Lazio, Italy)  
index:  
location:  
type: site  
name: Ariccia  
type: geographic  
vocab: TGN  
extent: inhabited place  
refid: 7007011

## MATERIAL

display: stone, stucco, fresco

## STYLE PERIOD

display: Late Baroque  
index:  
style period: Late Baroque  
vocab: AAT  
refid: 300021151

## SUBJECT

display: coffers (ceiling components); Mary, Blessed Virgin, Saint Assumption; dome: no pendentives; colonnade; portico; putti; angel; scroll; flower garlands; bell towers

index:  
subject:  
term: coffers (ceiling components)  
type: descriptiveTopic  
vocab: AAT  
refid: 300002041  
term: Mary, Blessed Virgin, Saint Assumption  
type: iconographicTopic  
vocab: LCSAF  
refid: sh 85081699

## TITLE

display: Santa Maria dell'Assunzione  
index:  
title: Santa Maria dell'Assunzione  
type: cited  
pref: true  
title: Saint Mary of the Assumption  
type: translated  
xml:lang: en  
pref: false

## WORKTYPE

display: church  
index:  
worktype: church  
vocab: AAT  
refid: 300007466

## IMAGE [RECORD]

id: 1A1-BG-SMA-A1  
refid: 1A1-BG-SMA-A1.jpg  
source: Archivision, Inc.

## AGENT

display: Scott Gilchrist (1960-)  
index:  
agent:  
name: Gilchrist, Scott  
type: personal  
dates: 1960-  
type: life  
earliest date: 1960  
latest date: 0  
culture: Canadian  
role: photographer

## RELATION

index:  
relation: Santa Maria dell'Assunzione  
type: imageOf  
relids: w\_1A1-BG-SMA

## RIGHTS

display: All images © Scott Gilchrist, Archivision, Inc.  
index:  
rights:  
rights holder: Scott Gilchrist; <http://www.archivision.com/>  
text: All rights reserved

## SOURCE

display:  
index:  
source:  
name: Archivision, Inc.  
type: vendor  
refid: 1A1-BG-SMA-A1

## SUBJECT

display: dome: no pendentives, colonnades, porticoes, pediment, Ariccia, piazza, bell towers

index:  
subject:  
term: colonnades  
type: descriptiveTopic  
vocab: AAT  
refid: 300002613  
term: porticoes  
type: descriptiveTopic  
vocab: AAT  
refid: 300004145  
term: bell towers  
type: descriptiveTopic  
vocab: AAT  
refid: 300004848

## TITLE

display: Context view, showing location of the church in the Medieval town of Ariccia

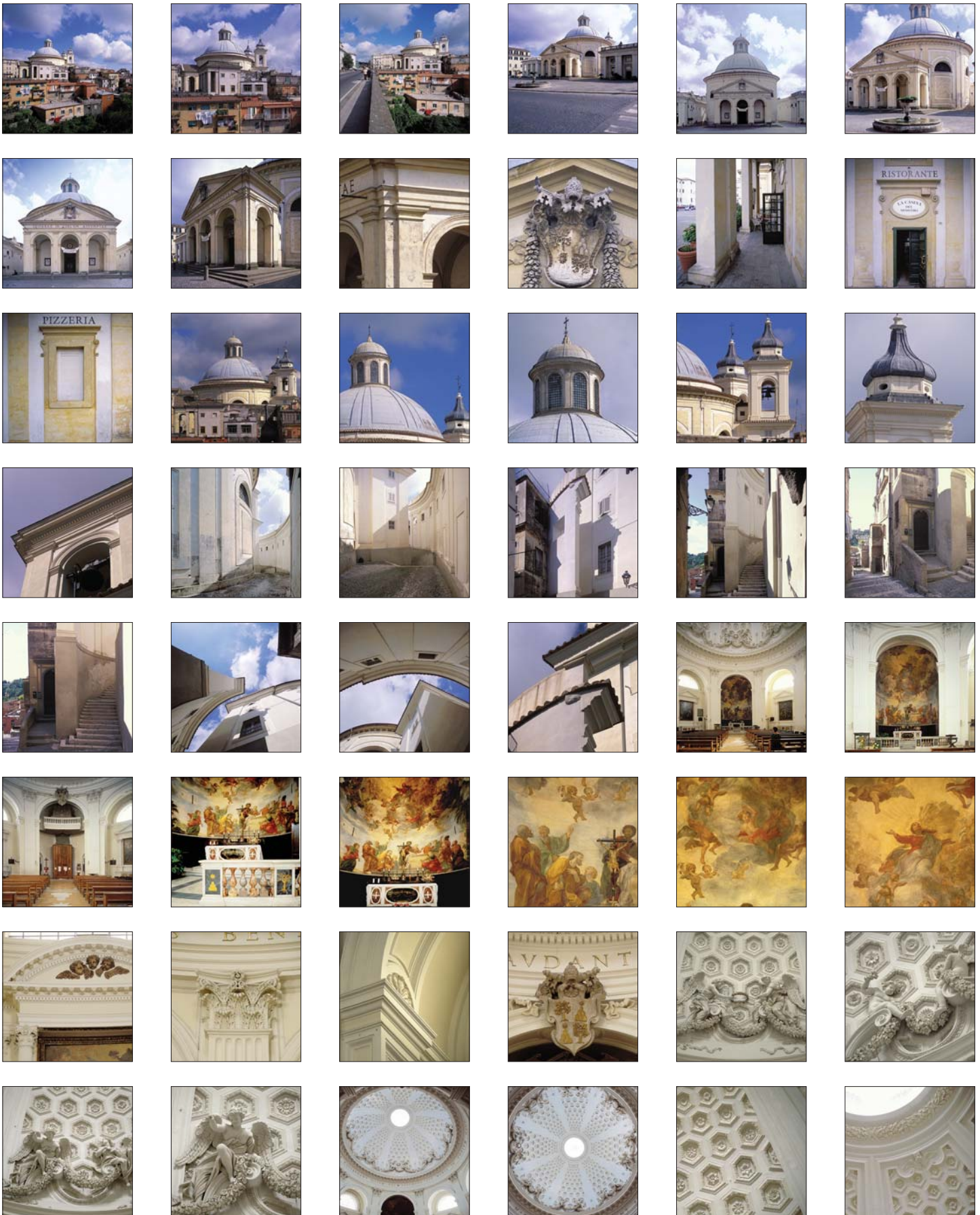
index:  
title: Context view, showing location of the church in the Medieval town of Ariccia  
type: generalView  
pref: true

## WORKTYPE

display: digital image  
index:  
worktype: digital image  
vocab: AAT  
refid: 300215302

► Sample record showing VRA Core 4 XML-compliant data. Data is also available in csv (comma separated values) format and can be mapped as needed.

► Our photographic documentations are the most extensive available from any source.





**Architecture & Art by Architect / Artist**

- architectsAlliance:  
1A1-ALA-YEB :: Computer Science and Engineering Building, York University (25)
- Baranovsky, Gavriil:  
1A1-BGA-Y :: Yeliseev's (31)
- Belluschi, Pietro:  
1A1-BPI-CPH :: Century Plaza Hotel (2)
- Becket, Welton David:  
1A1-BWD-CRT :: Capitol Records Tower (9)
- Chevakinsky, Savva:  
1A1-CSA-SNC :: St. Nicholas Cathedral (22)
- Erickson, Arthur:  
1A1-EA-BC :: Bank of Canada Building; Addition (5)  
1A1-EA-MA-1 :: Museum of Anthropology: Museum (20)  
1A1-EA-MA-2 :: Museum of Anthropology: Haida House and Totem Poles (19)  
1A1-EA-MA-3 :: Museum of Anthropology: Totem Poles (14)
- Fel'ten, Yury:  
1A1-FY-AC :: St. Catherine's Armenian Church (16)
- Foster and Partners:  
1A1-FPA-FB :: Imperial College Faculty Building (6)  
1A1-FPA-TBS :: Imperial College Tanaka Business School (47)  
1A1-FPA-LCH :: London City Hall (68)  
1A1-FPA-ML :: More London (27)  
1A1-FPA-SA :: Stansted Airport (26)  
1A1-FPA-SRT :: Swiss Re Tower (33)
- Fowler, Charles:  
1A1-FC-SHC :: Syon House Conservatory (58)
- Gehry, Frank Owen:  
1A1-GF-DCH-1 :: Disney Concert Hall: Exterior (177)  
1A1-GF-DCH-2 :: Disney Concert Hall: Interior (119)
- Gensler Architecture:  
1A1-GADP-AS :: 2000 Avenue of the Stars (13)
- Gribble, Herbert:  
1A1-GHE-BO :: Brompton Oratory (3)



1A1-FC-SHC-A1 / Syon House Conservatory, by C. Fowler



1A1-BGA-Y-B5 / Yeliseev's



1A1-BWD-CRT-A6



1A1-ALA-YEB-A9



1A1-CSA-SNC-C5



1A1-EA-MA-2-B6



1A1-FPA-TBS-D18 / Tanaka Bus.



1A1-FPA-LCH-D15 / City Hall



1A1-GF-DCH-1-C21 / Disney C.



1A1-GF-DCH-2-I4 / Disney C.



1A1-GF-DCH-2-B7



1A1-FPA-SA-A7



1A1-FPA-SRT-A5



1A1-MAR-AC-A1



1A1-MAR-SI-H2



1A1-MCR-GS-1-D9



1A1-KAL-MT-A1 / Mariinsky Th.



1A1-KP-IB-J40 / IBM Marathon



1A1-ME-PB-F20 / Scottish Parliament Building, by E. Miralles



1A1-ME-PB-I10



1A1-ME-PBP-A6



1A1-RKI-GS-E2



1A1-MCR-HAL-A1 / House for an Art Lover, by C. R. Mackintosh

Johnson, Fain and Pereire Associates:  
:: Fox Plaza (Century City) (1)

Kavos, Al'bert:  
:: Mariinsky Theatre (2)

Kohn Pederson Fox Associates:  
:: IBM Marathon Building (43)

Mackintosh, Charles Rennie:  
:: Glasgow School of Art: Exterior (171)  
:: Glasgow School of Art: Interior (38)  
:: Glasgow School of Art:  
Plans and Historic Photos (24)  
1A1-MCR-HAL :: House for an Art Lover (175)

Miralles, Enric:  
:: Scottish Parliament Building (210)  
1A1-ME-PB  
1A1-ME-PBP :: Scottish Parliament Building Park (33)

Montferrand, August Ricard de:  
:: Alexander Column (7)  
1A1-MAR-AC  
1A1-MAR-SI :: St. Isaac's Cathedral (37)

Moretti, Luigi:  
1A1-ML-TV :: Tour de la Bourse (7)

Pei, I.M.:  
1A1-PI-PV :: Place Ville-Marie (27)

Pope, John Russell:  
1A1-PJR-PG :: Parthenon Gallery (2)

Portman, John:  
1A1-PJ-WBH :: Westin Bonaventure Hotel (29)

Rossi, Karl:  
1A1-RKI-AT :: Alexandrinsky Theater (13)  
1A1-RKI-GS :: General Staff Building (29)  
1A1-RKI-MP :: Mikhailovsky Palace (18)  
1A1-RKI-UZR :: Ulitsa Zodgevo Rossi (9)

Sheppard Robson:  
1A1-SHR-BB :: Imperial College Bessemer Building (4)

Syuzor, Pavel:  
1A1-SPY-HB :: House of Books (13)

Trezzini, Domenico:  
1A1-TD-CPP :: Cathedral of Saints Peter and Paul (40)  
1A1-TD-PPF :: Peter and Paul Fortress (28)



1A1-MCR-GS-1-B9



1A1-MCR-GS-1-D3



1A1-MCR-GS-1-D11

## MACKINTOSH



1A1-MCR-GS-1-G1



1A1-MCR-HAL-E5



1A1-MCR-HAL-E27



1A1-MCR-HAL-C4



1A1-MCR-HAL-E23



1A1-MCR-HAL-G15



1A1-MCR-GS-1-B27



1A1-MCR-HAL-A14



1A1-MCR-HAL-E41



1A1-VAN-CLK-A4 / Lady of Kazan



1A1-VJB-CSC-A2 / St. Catherine



1A1-TT-RC-C1



1A1-VV-TG-C2



1A1-WC-SMB-B3



1A1-VV-TG-B1 / Tretyakov



1A1-WC-SSW-G7 / St. Stephen



1A1-WG-BB-A6 / Bradbury



1A1-WG-BB-D9 / Bradbury



1A1-WC-SMB-C3



1A1-YM-CPT-A2



1A1-ZA-A-C4



1A2-C-KL-HV-C2



1A2-C-O-CP-F2



1A2-C-O-CP-F4

1A1-TT-SE  
1A1-TT-RC

Thomon, Thomas de:  
:: Central Naval Museum (10)  
:: Rostral Columns (16)

1A1-VJB-CSC

Vallin de La Mothe, Jean-Baptiste Michel:  
:: Church of Saint Catherine (5)

1A1-VV-TG

Vasnetsov, Viktor:  
:: Tretyakov Gallery (28)

1A1-VAN-CLK

Voronikhin, Andrey:  
:: Cathedral of Our Lady of Kazan (8)

1A1-WC-M  
1A1-WC-SM  
1A1-WC-SMAB  
1A1-WC-SMA  
1A1-WC-SMB  
1A1-WC-SNC  
1A1-WC-SSW

Wren, Christopher:  
:: Monument (The) (12)  
:: Saint Magnus (7)  
:: Saint Mary Abchurch (2)  
:: Saint Mary Aldermary (9)  
:: Saint Mary-le-Bow (19)  
:: Saint Nicholas Cole Abbey (16)  
:: Saint Stephen Walbrook (31)

1A1-WG-BB

Wyman, George H.:  
:: Bradbury Building (59)

1A1-YM-CPT

Yamasaki, Minoru:  
:: Century Plaza Towers (6)

1A1-ZA-A

Zakharov, Andreyan:  
:: The Admiralty (21)

### Architecture & Art by Country

1A2-C-KL-HV

Canada: New Brunswick: Kings Landing:  
:: Kings Landing Historical Settlement (39)

1A2-C-O-CP

Canada: Ontario: Ottawa  
:: Canadian Parliament Buildings (37)

1A2-C-M-CC  
1A2-C-M-DS  
1A2-C-M-MQW  
1A2-C-M-MC  
1A2-C-M-MWTC  
1A2-C-M-PMR  
1A2-C-M-PA  
1A2-C-M-RSJ  
1A2-C-M-RBB

Canada: Quebec: Montreal:  
:: Château Champlain (13)  
:: Dorchester Square (14)  
:: Mary Queen of the World Cathedral (64)  
:: McGill College Avenue (30)  
:: Montreal World Trade Centre (43)  
:: Montreal Plateau District (125)  
:: Place d'Armes (13)  
:: Rue Saint-Jacques (16)  
:: Tour de la Banque Royale (14)



1A2-C-M-DS-A13 / Dorchester Square



1A2-C-M-CC-A17 / Château Champlain



1A2-C-M-MQW-A2 / Mary Q. World

## MONTREAL



1A2-C-M-MQW-F2 / Mary Queen of the World Cathedral



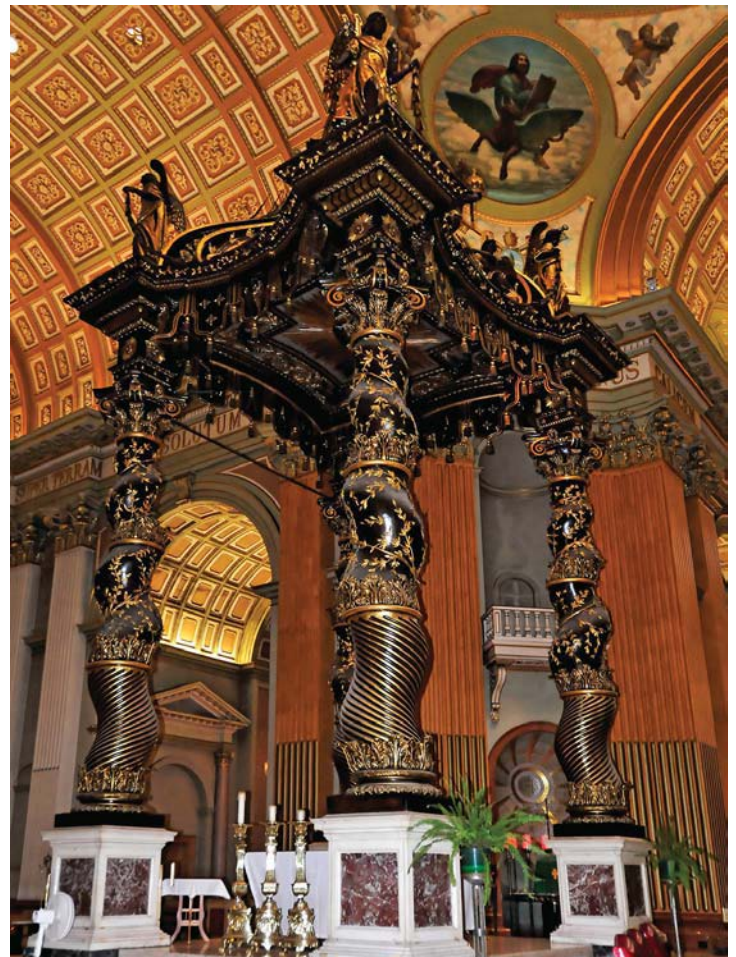
1A2-C-M-MWTC-A17 / Montreal World Trade Center



1A2-C-M-PMR-A23 / Plateau District



1A2-C-M-RSJ-A11 / Rue Saint-Jacques



1A2-C-M-MQW-E2 / Mary Queen of the World Cathedral



1A2-C-M-PMR-A105



1A2-C-M-RBB-A1



1A2-C-M-RSJ-A6



1A2-E-L-CH-1-G2 / Chiswick H.



1A2-E-L-CH-2-A7 / Chiswick G.



1A2-E-L-SH-B1



1A2-E-L-CH-3-B3



1A2-E-L-VA-A1



1A2-F-P-HS-A2



1A2-F-P-I-1-A4



1A2-F-P-I-4-A4



1A2-F-P-I-3-C2 / Hôtel des Inv.



1A2-M-MC-AC-D1 / Alameda C.



1A2-M-MC-CM-E6



1A2-M-MC-HC-B7



1A2-M-MC-PC-E1



1A2-M-MC-AV-A8 / Mexico Aerial



1A2-M-MC-AP-C6 / Palacio Inq.

England: London:

- 1A2-E-L-CH-1 :: Chiswick House (99)
- 1A2-E-L-CH-2 :: Chiswick House Gardens (73)
- 1A2-E-L-CH-3 :: Chiswick House: Italian Garden Urn Reliefs (24)
- 1A2-E-L-SH :: Syon House (17)
- 1A2-E-L-VA :: Victoria and Albert Museum Cast Courts (11)

France: Paris:

- 1A2-F-P-HSL :: Hôpital Saint-Louis (13)
- 1A2-F-P-HA :: Hôtel d'Almeras (6)
- 1A2-F-P-HL :: Hôtel de Lamoignon (9)
- 1A2-F-P-HS :: Hôtel de Sens (4)
- 1A2-F-P-I-1 :: Invalides: Église du Dome - Exterior (21)
- 1A2-F-P-I-4 :: Invalides: Église St-Louis (22)
- 1A2-F-P-I-3 :: Invalides: Hôtel des Invalides (21)
- 1A2-F-P-M :: La Madeleine (11)

France: Poissy:

- 1A2-F-P-CND :: Collégiale Notre-Dame (2)

Mexico: Cuernavaca:

- 1A2-M-CU-JB :: Jardines de Boda (13)
- 1A2-M-CU-PC :: Palacio de Cortes (11)
- 1A2-M-CU-TE :: Templo y ex Convento de Natividad (17)

Mexico: Mexico City:

- 1A2-M-MC-AC :: Alameda Central (22)
- 1A2-M-MC-AP :: Antiguo Palacio de la Inquisition (12)
- 1A2-M-MC-AN :: Auditorio Nacional (18)
- 1A2-M-MC-CA :: Casa de Los Azulejos (9)
- 1A2-M-MC-CM :: Catedral Metropolitana (35)
- 1A2-M-MC-CHS :: Centro Historico Sculptures (5)
- 1A2-M-MC-HC :: Gran Hotel Ciudad de México (12)
- 1A2-M-MC-IM :: Independence Monument (5)
- 1A2-M-MC-LTG :: Leon Trotsky's Grave (2)
- 1A2-M-MC-AV :: Mexico City: Aerial Views (10)
- 1A2-M-MC-NH :: Monument to the Ninos Heroes (6)
- 1A2-M-MC-MH :: Museo Nacional de Historia (16)
- 1A2-M-MC-MN :: Museo Nacional de Anthropologia (14)
- 1A2-M-MC-PB :: Palacio de Bellas Artes (20)
- 1A2-M-MC-PC :: Palacio de Correos (19)
- 1A2-M-MC-PI :: Palacio Iturbide (5)
- 1A2-M-MC-PM :: Palacio de Minería (27)
- 1A2-M-MC-PS :: Plaza de Santa Domingo (10)
- 1A2-M-MC-TS :: Templo de San Francisco (17)
- 1A2-M-MC-TM :: Templo Mayor (21)
- 1A2-M-MC-TL :: Torre Latinoamericana (10)
- 1A2-M-MC-Z :: Zocalo: Plaza de la Constitución (20)

Mexico: Puebla:

- 1A2-M-PU-BA :: Barrio de los Artistas (4)
- 1A2-M-PU-CA :: Casa del Alfeñique (16)
- 1A2-M-PU-CO :: Correos (7)
- 1A2-M-PU-LC :: La Compania Church (16)
- 1A2-M-PU-PL :: Palafoxian Library (3)
- 1A2-M-PU-PP :: Plaza Principal (10)
- 1A2-M-PU-C :: Puebla Cathedral (32)
- 1A2-M-PU-CH :: Puebla City Hall (4)
- 1A2-M-PU-PV :: Puebla Vernacular Architecture (64)
- 1A2-M-PU-SF :: Saint Francis Church (18)
- 1A2-M-PU-SD-1 :: Santo Domingo (23)
- 1A2-M-PU-SD-2 :: Santo Domingo: Capilla del Rosario (28)

Mexico: Taxco:

- 1A2-M-TA-TO :: Taxco: Overview (20)
- 1A2-M-TA-PS :: Templo de Santa Prisca (18)

Mexico: Tepetzolán:

- 1A2-M-MC-SF-1 :: San Francisco Javier: Facade (18)
- 1A2-M-MC-SF-2 :: San Francisco Javier: Secondary Church (39)
- 1A2-M-MC-SF-3 :: San Francisco Javier: Cloister (23)

Russia: Moscow:

- 1A2-R-M-BT :: Bolshoy Theatre (3)
- 1A2-R-M-CCR :: Cathedral of Christ the Redeemer (1)
- 1A2-R-M-COL :: Church of Our Lady of Kazan (13)
- 1A2-R-M-SKD :: Church of Sofia of Knowledge Divine (2)
- 1A2-R-M-CSG :: Church of St. George (4)
- 1A2-R-M-CCS :: Church of the Consolation of all Sorrows (7)
- 1A2-R-M-GUM :: GUM Department Store (15)
- 1A2-R-M-HL :: Hotel Leningradskaya (9)
- 1A2-R-M-HU :: Hotel Ukraine (1)
- 1A2-R-M-KC :: Kazan Cathedral (5)
- 1A2-R-M-KO :: Kolomenskoe (22)
- 1A2-R-M-BMF :: Kolomenskoe: Bee Masters Farmstead (8)
- 1A2-R-M-MB :: Kolomenskoe: Mead Brewery (5)
- 1A2-R-M-KEB :: Kotelnicheskaya Embankment Building (5)
- 1A2-R-M-K-2 :: Kremlin: Cathedral Square (25)
- 1A2-R-M-K-3 :: Kremlin: Churches (82)
- 1A2-R-M-K-4 :: Kremlin: Palace (17)
- 1A2-R-M-K-5 :: Kremlin: State Kremlin Palace (6)
- 1A2-R-M-K-1 :: Kremlin: Walls (33)
- 1A2-R-M-LM :: Lenin's Mausoleum (4)
- 1A2-R-M-L :: Lubyanka (1)
- 1A2-R-M-MME :: Mayakovsky Museum Entrance (8)
- 1A2-R-M-MFA :: Ministry of Foreign Affairs (1)
- 1A2-R-M-MHI :: Ministry of Heavy Industry (10)



1A2-M-PU-SF-A2



1A2-M-TA-PS-G3



1A2-M-MC-SF-2-F7



1A2-M-MC-SF-3-A4



1A2-M-PU-SF-C3



1A2-R-M-CSG-A1



1A2-M-PU-CA-C3 / Casa Alfeñique



1A2-M-PU-C-F4 / Puebla Cath.



1A2-R-M-K-1-A1 / Kremlin: Walls



1A2-R-M-LM-A3 / Lenin's Maus.



1A2-R-M-MHI-A8 / Heavy Indus.



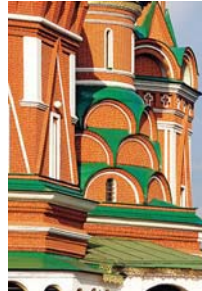
1A2-R-SP-TS-1-A3 / Tsarskoye Selo: The Palace



1A2-R-M-MU-A7



1A2-R-M-N-A5



1A2-R-M-SB-B8



1A2-R-M-RS-A14 / Red Square



1A2-R-M-SB-A6 / Saint Basil's



1A2-R-SP-H-1-A8



1A2-R-SP-TS-1-A10



1A2-R-SP-TS-2-C7



1A2-R-SP-PA-1-C11 / Peterhof P.



1A2-R-SP-P-4-A3 / Peterhof G.

*Russia: Moscow, continued:*

- 1A2-R-M-CB :: Ministry of Railways (7)
- 1A2-R-M-MS :: Monastery of the Sign (3)
- 1A2-R-M-MP :: Monument to Minin and Pozharsky (3)
- 1A2-R-M-MM :: Moscow Metro (11)
- 1A2-R-M-MU :: Moscow State University (18)
- 1A2-R-M-SKP :: Moskva River (13)
- 1A2-R-M-N :: Novodevichy Convent (61)
- 1A2-R-M-OEC :: Old English Court (3)
- 1A2-R-M-PTS :: Pavel Tretyakov Statue (2)
- 1A2-R-M-PGC :: Peter the Great Cabin (11)
- 1A2-R-M-RS :: Red Square (20)
- 1A2-R-M-RG :: Resurrection Gate (10)
- 1A2-R-M-RH :: Rossiya Hotel (12)
- 1A2-R-M-SB :: Saint Basil's Cathedral (64)
- 1A2-R-M-HM :: State Historical Museum (7)
- 1A2-R-M-TMS :: Trinity Monastery of St. Sergius (157)
- 1A2-R-M-UC :: Udarnik Cinema (3)
- 1A2-R-M-VHM :: Vasnetsov House and Museum (10)
- 1A2-R-M-YS :: Yaroslavskiy Station (20)

*Russia: Saint Petersburg:*

- 1A2-R-SP-AP :: Anichkov Palace (15)
- 1A2-R-SP-CSB :: Church of the Savior on Spilled Blood (39)
- 1A2-R-SP-GD :: Gostinyi Dvor (4)
- 1A2-R-SP-H-6 :: Hermitage: Atlantes (13)
- 1A2-R-SP-H-5 :: Hermitage: Other Parts (16)
- 1A2-R-SP-H-4 :: Hermitage: Pavilion Hall (8)
- 1A2-R-SP-H-1 :: Hermitage: Winter Palace - North Elevation (18)
- 1A2-R-SP-H-2 :: Hermitage: Winter Palace - South Elevation (21)
- 1A2-R-SP-H-3 :: Hermitage: Winter Palace - Court (28)
- 1A2-R-SP-PS :: Palace Square (10)
- 1A2-R-SP-PA-2 :: Pavlovsk: Gardens (76)
- 1A2-R-SP-PA-3 :: Pavlovsk: Sculpture (11)
- 1A2-R-SP-PA-1 :: Pavlovsk: Villa (58)
- 1A2-R-SP-P-3 :: Peterhof: Gardens (30)
- 1A2-R-SP-P-4 :: Peterhof: Fountains (48)
- 1A2-R-SP-P-1 :: Peterhof: Palace (46)
- 1A2-R-SP-P-2 :: Peterhof: Water Cascade and Canal (60)
- 1A2-R-SP-PR :: Portik Rusca (2)
- 1A2-R-SP-CV :: Saint Petersburg: City Views (28)
- 1A2-R-SP-SC :: Saint Petersburg: Street Scenes (8)
- 1A2-R-SP-C :: Saint Petersburg Canals (14)
- 1A2-R-SP-SS :: Stalinist Suburbs (14)
- 1A2-R-SP-S :: The Strelka (19)
- 1A2-R-SP-TS-1 :: Tsarskoye Selo: The Palace (42)
- 1A2-R-SP-TS-2 :: Tsarskoye Selo: The Gardens (67)
- 1A2-R-SP-TS-3 :: Tsarskoye Selo: Alexander Palace (10)





1A2-R-SP-P-2-B18



1A2-R-SP-P-2-A1



1A2-R-SP-P-1-B1

# PETERHOF



1A2-R-SP-P-4-A5



1A2-R-SP-P-2-E4



1A2-R-SP-P-4-D6



1A2-R-SP-P-4-K1



1A2-R-SP-P-4-E2



1A2-R-SP-P-2-B19



1A2-R-SP-P-1-C2



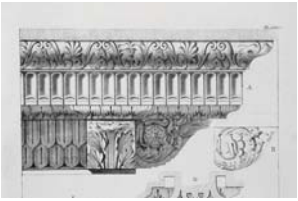
1A2-R-SP-P-4-B3



1A2-US-LA-LMA-A5 / LA Museum



1A2-US-DV-DIA-A12 / Denver A.



1A3-R-AD-R10 / Roman Draw.



1A3-R-AD-A21 / Roman Draw.



1A4-W-1-M12 / Architectural Elements: Windows



6A1-FEL-H-A1 / Horse, by E. Frink



6A1-CA-BF-A2



6A1-GAR-SDS-A2



6A1-HLP-MM-A6

United States:

- 1A2-US-DV-DIA :: Denver International Airport (18)
- 1A2-US-LA-AS :: Avenue of the Stars (4)
- 1A2-US-LA-LASG :: UCLA Sculpture Garden (7)
- 1A2-US-LA-LMA :: Los Angeles County Museum of Art (12)

**Architecture & Art by Period**

- 1A3-R-AD :: Roman Drawings (from the books: Architectural Antiquities of Rome; Fragments d'Architecture Antique; Classic and Renaissance Architecture) (348)

**Architecture by Topic**

- 1A4-W-1 :: Architectural Elements: Windows (267)

**Art in Public by Artist**

- Arp, Hans:
  - 6A1-AH-HFCP :: Hybrid Fruit Called Pagoda (3)

- Calder, Alexander:
  - 6A1-CA-BF :: Button Flower (3)

- Chadwick, Lynn Russell:
  - 6A1-CL-E :: Encounter VIII (3)

- Etrog, Sorel:
  - 6A1-ES-MAC :: Mother and Child (6)

- Frink, Elisabeth:
  - 6A1-FEL-H :: Horse (4)
  - 6A1-FEL-RM :: Running Man (3)

- Gagnon, Aristide:
  - 6A1-GAR-SDS :: Sphère des songes (5)

- Graham, Robert:
  - 6A1-GRO-DC :: Dance Columns I and II (6)

- Hepworth, Barbara:
  - 6A1-HBA-E :: Elegy III (2)
  - 6A1-HBA-OF :: Oval Form (2)

- Hébert, Louis-Philippe:
  - 6A1-HLP-IBM :: Ignace Bourget Monument (9)
  - 6A1-HLP-MM :: Maisonneuve Monument (29)

- Noguchi, Isamu:
  - 6A1-IN-TTH :: The Tent of Holofernes (1)



1A2-R-SP-H-6-A9 / Hermitage



1A2-R-SP-H-5-A5 / Hermitage



1A2-R-SP-H-5-B2 / Hermitage

## SAINT PETERSBURG



1A2-R-SP-SS-A2 / Stalinist Suburbs



1A2-R-SP-CV-B6 / Saint Petersburg: City Views



1A2-R-SP-H-2-A7 / Winter Palace



1A2-R-SP-CSB-B1 / C. Spilled Blood



1A2-R-SP-H-6-A5



1A2-R-SP-CSB-B4



1A2-R-SP-H-3-C15



1A2-R-SP-PA-2-E1 / Pavlovsk: Gardens



6A1-LHE-A-A2 / Automne



6A1-LJ-TSOV-A3 / by J. Lipchitz



6A1-MH-DRM-A1 / by H. Moore



6A1-MH-TPR3-A1 / by H. Moore



6A1-SRI-TEU-A2 / T.E.U.C.L.A.



6A1-SPT-BNS-A1 / by P. Shelton



6A1-LG-SW-A2



6A1-TG-O-A2



6A1-TW-LMV-A4



6A1-MJ-F-A3



6A1-MGE-M-A1



6A1-LJ-TB-A6

6A1-LG-SW Lachaise, Gaston:  
:: Standing Woman (6)

6A1-LHE-A Laurens, Henri:  
:: Automne (11)

6A1-LJ-TB Lipchitz, Jacques:  
6A1-LJ-TSOV :: The Bather (7)  
:: The Song of the Vowels (7)

6A1-MAA-T Maillol, Aristide:  
:: Torso (2)

6A1-MGE-M Marcks, Gerhard:  
:: Maja (3)

6A1-MH-BF Moore, Henry:  
6A1-MH-DRM :: Bronze Form (7)  
6A1-MH-TPR3 :: Draped Reclining Mother and Baby (8)  
:: Two-Piece Reclining Figure, No. 3 (3)

6A1-MJ-F Miró, Joán:  
:: Figure (5)

6A1-SD-CXX Smith, David:  
:: Cubi XX (4)

6A1-SF-VA Somaini, Francesco:  
:: Verticali - Assulonne (1)

6A1-SPT-BNS Shelton, Peter T.:  
:: bronzenightshirt (2)

6A1-SRI-TEU Serra, Richard:  
:: T.E.U.C.L.A. (3)

6A1-TG-O Tsutakawa, George:  
:: Obos 69 (5)

6A1-TW-LMV Turnbull, William:  
:: Large Metamorphic Venus (4)

**Art in Public by Country**

6A2-C-M-BWM Canada: Quebec: Montreal:  
:: Strathcona Monument (13)



1A2-R-M-TMS-D3



1A2-R-M-TMS-N10



1A2-R-M-TMS-D11

## TRINITY MONASTERY OF ST. SERGIUS



1A2-R-M-TMS-E3



1A2-R-M-TMS-I2



1A2-R-M-TMS-G13



1A2-R-M-TMS-I4



1A2-R-M-TMS-A3



1A2-R-M-TMS-J3



1A2-R-M-TMS-I10



1A2-R-M-TMS-R2



1A2-R-M-TMS-C10



6A3-A-GA-A2



7A1-KAD-VA-SL-B3



7A1-MB-VA-D-A9



6A3-A-GA-A6 / Berlin Wall Frag.



7A1-BHA-VA-A3 / Christ Bearing...



7A3-G-BM-EM-1-B5 / Elgin M.



7A3-G-BM-NM-B3 / Nereid M.



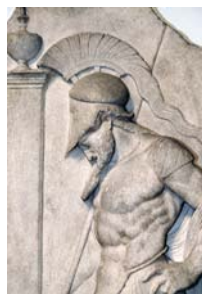
7A1-RS-VA-SA-A1 / School of Athens (copy)



7A3-G-BM-EM-4-B10 / Elgin Marbles: North Frieze



7A3-A-BM-KPS-A7



7A3-R-BM-MRW-A2



7A3-G-BM-PC-A1

## Art in Public by Period

Modern:

6A3-A-GA :: Graffiti: Berlin Wall Fragment (13)

## Art in Museums by Artist

Brüggemann, Hans:

7A1-BHA-VA :: Christ Bearing His Cross (3)

Kraft, Adam:

7A1-KAD-VA-SL :: The Schreyer Landauer (16)

Buonarroti, Michelangelo:

7A1-MB-VA-D :: David (plaster cast) (14)

7A1-MB-VA-DS :: Dying Slave (plaster cast) (1)

7A1-MB-VA-GM :: Giuliano de Medici (plaster cast) (1)

7A1-MB-VA-LM :: Lorenzo de' Medici (plaster cast) (1)

7A1-MB-VA-M :: Moses (plaster cast) (4)

7A1-MB-VA-RS :: Rebellious Slave (plaster cast) (1)

Raphael:

7A1-RS-VA-SA :: School of Athens (copy) (16)

## Art in Museums

British Museum:

7A3-A-BM-ASAK :: Alabaster Stela of the Assyrian

7A3-G-BM-AHK :: Apollo Holding a Kithara (6)  
King Ashurnasirpal II (1)

7A3-G-BM-EM-6 :: Elgin Marbles: East Frieze (5)

7A3-G-BM-EM-1 :: Elgin Marbles: East Pediment (15)

7A3-G-BM-EM-7 :: Elgin Marbles: Plaster Cast Room (25)

7A3-G-BM-EM-4 :: Elgin Marbles: North Frieze (28)

7A3-G-BM-EM-5 :: Elgin Marbles: South Frieze (16)

7A3-G-BM-EM-3 :: Elgin Marbles: South Metopes (33)

7A3-G-BM-EM-2 :: Elgin Marbles: West Pediment (7)

7A3-A-BM-KPS :: Khorsabad Palace of Sargon (7)

7A3-G-BM-CDA :: Later Temple of Artemis (5)

7A3-G-BM-MHA :: Marble Head of Apollo (2)

7A3-R-BM-MRW :: Marble Relief of a Warrior (2)

7A3-G-BM-MSY :: Marble Statue of a Youth (2)

7A3-G-BM-MSV :: Marble Statue of Victorious Athlete (1)

7A3-G-BM-MH :: Molossian Hound (2)

7A3-G-BM-NM :: Nereid Monument (48)

7A3-G-BM-PC :: Perikles Citizen and Soldier (3)

7A3-G-BM-VA :: Victorious Athlete Tying Ribbon (6)



7A3-G-BM-EM-7-A10 / Cast R.



7A3-G-BM-EM-4-B17 / North Frieze



7A3-G-BM-EM-6-A1 / East Frieze

# ELGIN MARBLES AND GREEK COLLECTION AT THE BRITISH MUSEUM



7A3-G-BM-EM-3-A7 / South Metopes



7A3-G-BM-EM-4-B7 / North Frieze



7A3-G-BM-EM-1-A7



7A3-G-BM-EM-4-A2 / North Frieze



7A3-G-BM-EM-1-B1 / E. Pediment



7A3-G-BM-EM-3-A5 / South Metopes



7A3-G-EM-EM-3-A12



7A3-G-BM-EM-2-B2



7A3-G-BM-EM-7-A17



7A3-M-VA-ECT-A1 / Ely Cath.



7A3-AN-VA-RS-A2 / Iron Railing from Scotland



7A3-R-VA-TSL-A22

VICTORIA AND ALBERT MUSEUM



7A3-M-VA-SCT-A1 / Shobdon Church Tympanum



7A3-M-VA-MS-A3 / Santo Domingo de Silos: Maries at...



7A3-M-VA-ACD-A6



7A3-M-VA-SP-A2 / Santo Dom...



7A3-M-VA-HCF-A7 / Hildesheim



7A3-M-VA-TPB-A1 / Tombstone for Presbyter Bruno



7A3-M-VA-SGSD-A1



7A3-R-VA-TSL-A17



7A3-M-VA-UCD-A1



Victoria and Albert Museum:

- 7A3-M-VA-ACD :: Ál Church Door (6)
- 7A3-R-VA-SSP :: Cathedral of St Sauveur Portal (8)
- 7A3-M-VA-CBC :: Christ at Bethany (1)
- 7A3-M-VA-FCD :: Church of Flaa Door (3)
- 7A3-R-VA-TSL :: Church of St Leonard Tabernacle (23)
- 7A3-M-VA-SMK :: Church of St Maria im Kapitol Doorway (1)
- 7A3-M-VA-ECT :: Ely Cathedral Tympanum (1)
- 7A3-R-VA-FI :: Fontaine des Innocents Plaster Casts (6)
- 7A3-M-VA-HCF :: Hildesheim Cathedral Font (8)
- 7A3-19C-VA-BE :: Iron Baluster England (19th century) (1)
- 7A3-20C-VA-BE :: Iron Baluster England (20th century) (2)
- 7A3-AN-VA-RS :: Iron Railing from Scotland (2)
- 7A3-B-VA-SB :: Iron Staircase Balustrade from Italy (3)
- 7A3-M-VA-LF :: Liege Font (10)
- 7A3-M-VA-LIC :: Louth Ireland Cross (2)
- 7A3-RE-VA-PG :: Puerta de la Gloria (47)
- 7A3-M-VA-RLC :: Raising of Lazarus (1)
- 7A3-R-VA-SJRC :: San Juan de los Reyes Cloister (9)
- 7A3-M-VA-SP :: Santo Domingo de Silos: Pentecost (3)
- 7A3-M-VA-DS :: Santo Domingo de Silos:  
The Deposition (3)
- 7A3-M-VA-ISTS :: Santo Domingo de Silos:  
The Incredulity of St Thomas (2)
- 7A3-M-VA-MS :: Santo Domingo de Silos:  
The Maries at the Sepulchre (3)
- 7A3-M-VA-SCT :: Shobdon Church Tympanum (1)
- 7A3-M-VA-SGSD :: St George Slaying the Dragon (4)
- 7A3-M-VA-TPB :: Tombstone for Presbyter Bruno (1)
- 7A3-M-VA-UCD :: Urnes Church Door (1)



7A3-RE-VA-PG-A28 / Puerta de la Gloria



7A3-M-VA-LF-A2 / Liege Font



7A3-M-VA-LF-A5 / Liege Font



7A3-R-VA-TSL-A23 / Church of St Leonard Tabernacle

**END ADDITION MODULE FOUR  
OF 6,000 IMAGES**



7A3-RE-VA-PG-B8 / Puerta de...



7A3-B-VA-SB-A1 / Iron Stair...



7A3-M-VA-LIC-A1



7A3-R-VA-TSL-A6



7A3-RE-VA-PG-A16